

# EMIL3 rabbit pAb

Cat No.:ES16751

For research use only

## Overview

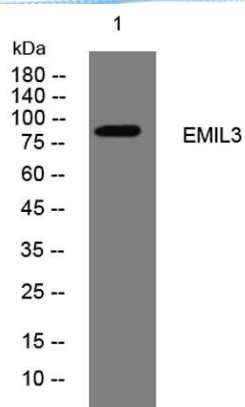
Product Name	EMIL3 rabbit pAb
Host species	Rabbit
Applications	WB
Species Cross-Reactivity	Human; Mouse
Recommended dilutions	WB 1:500-2000
Immunogen	Synthesized peptide derived from human EMIL3 AA range: 2-52
Specificity	This antibody detects endogenous levels of EMIL3 at Human/Mouse
Formulation	Liquid in PBS containing 50% glycerol, 0.5% BSA and 0.02% sodium azide.
Storage	Store at -20°C. Avoid repeated freeze-thaw cycles.
Protein Name	EMIL3
Gene Name	EMILIN3 C20orf130 EMILIN5
Cellular localization	Secreted, extracellular space, extracellular matrix .
Purification	The antibody was affinity-purified from rabbit antiserum by affinity-chromatography using epitope-specific immunogen.
Clonality	Polyclonal
Concentration	1 mg/ml
Observed band	85kD
Human Gene ID	90187
Human Swiss-Prot Number	Q9NT22
Alternative Names	EMILIN-3 (EMILIN-5) (Elastin microfibril interface-located protein 3) (Elastin microfibril interfacer 3) (Elastin microfibril interface-located protein 5) (Elastin microfibril interfacer 5)

## Background





**ELK Biotechnology**



Western blot analysis of lysates from HuvEc cells, primary antibody was diluted at 1:1000, 4° over night



+86-27-59760950

ELKbio@ELKbiotech.com

[www.elkbiotech.com](http://www.elkbiotech.com)

23-2, No.388 Gaoxin 2nd Road, Wuhan East Lake Hi-tech Development Zone, Hubei, P.R.C.