

## EVX2 rabbit pAb

Cat No.:ES16657

For research use only

### Overview

Product Name	EVX2 rabbit pAb
Host species	Rabbit
Applications	WB
Species Cross-Reactivity	Human; Mouse
Recommended dilutions	WB 1: 500-2000
Immunogen	Synthesized peptide derived from human EVX2 AA range: 138-188
Specificity	This antibody detects endogenous levels of EVX2 at Human/Mouse
Formulation	Liquid in PBS containing 50% glycerol, 0.5% BSA and 0.02% sodium azide.
Storage	Store at -20°C. Avoid repeated freeze-thaw cycles.
Protein Name	EVX2
Gene Name	EVX2
Cellular localization	Nucleus.
Purification	The antibody was affinity-purified from rabbit antiserum by affinity-chromatography using epitope-specific immunogen.
Clonality	Polyclonal
Concentration	1 mg/ml
Observed band	
Human Gene ID	344191
Human Swiss-Prot Number	Q03828
Alternative Names	
Background	This gene is located at the 5' end of the HOXD gene cluster on chromosome 2. The encoded protein is a homeobox transcription factor that is related to the protein encoded by the Drosophila even-skipped (eve) gene, a member of the pair-rule class of segmentation genes. A 117 kb microdeletion at the 5' end of the HOXD gene cluster, which includes this gene and the HOXD9-HOXD13 genes, causes synpolydactyly, a dominantly inherited disease

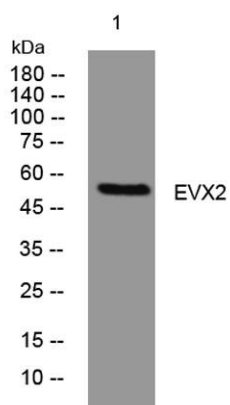




**ELK Biotechnology**

resulting in limb malformation. [provided by RefSeq,  
Sep 2009],

Western blot analysis of lysates from MCF-7 cells, primary  
antibody was diluted at 1:1000, 4° over night



+86-27-59760950

ELKbio@ELKbiotech.com

[www.elkbiotech.com](http://www.elkbiotech.com)

23-2, No.388 Gaoxin 2nd Road, Wuhan East Lake Hi-tech Development Zone, Hubei, P.R.C.