

EXTL2 rabbit pAb

Cat No.:ES16650

For research use only

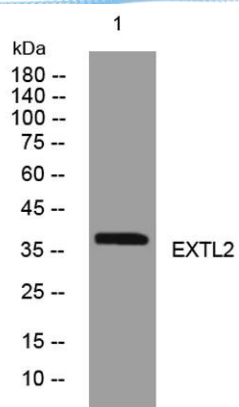
Overview

Product Name	EXTL2 rabbit pAb
Host species	Rabbit
Applications	WB
Species Cross-Reactivity	Human; Mouse
Recommended dilutions	WB 1: 500-2000
Immunogen	Synthesized peptide derived from human EXTL2 AA range: 141-191
Specificity	This antibody detects endogenous levels of EXTL2 at Human/Mouse
Formulation	Liquid in PBS containing 50% glycerol, 0.5% BSA and 0.02% sodium azide.
Storage	Store at -20°C. Avoid repeated freeze-thaw cycles.
Protein Name	EXTL2
Gene Name	EXTL2 EXTR2
Cellular localization	Endoplasmic reticulum membrane ; Single-pass type II membrane protein .; [Processed exostosin-like 2]: Secreted. A soluble form is found in the serum.
Purification	The antibody was affinity-purified from rabbit antiserum by affinity-chromatography using epitope-specific immunogen.
Clonality	Polyclonal
Concentration	1 mg/ml
Observed band	
Human Gene ID	2135
Human Swiss-Prot Number	Q9UBQ6
Alternative Names	
Background	





ELK Biotechnology



Western blot analysis of lysates from A431 cells, primary antibody was diluted at 1:1000, 4° over night



+86-27-59760950

ELKbio@ELKbiotech.com

www.elkbiotech.com

23-2, No.388 Gaoxin 2nd Road, Wuhan East Lake Hi-tech Development Zone, Hubei, P.R.C.