



ANKRD30A rabbit pAb

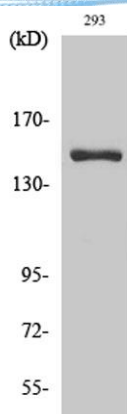
Cat No.:ES1653

For research use only

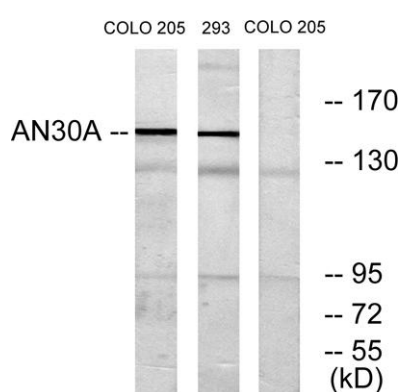
Overview

Product Name	ANKRD30A rabbit pAb
Host species	Rabbit
Applications	WB;IHC;IF;ELISA
Species Cross-Reactivity	Human;Rat;Mouse;
Recommended dilutions	Western Blot: 1/500 - 1/2000. Immunohistochemistry: 1/100 - 1/300. ELISA: 1/5000. Not yet tested in other applications.
Immunogen	The antiserum was produced against synthesized peptide derived from human AN30A. AA range:1041-1090
Specificity	ANKRD30A Polyclonal Antibody detects endogenous levels of ANKRD30A protein.
Formulation	Liquid in PBS containing 50% glycerol, 0.5% BSA and 0.02% sodium azide.
Storage	Store at -20°C. Avoid repeated freeze-thaw cycles.
Protein Name	Ankyrin repeat domain-containing protein 30A
Gene Name	ANKRD30A
Cellular localization	nucleus,
Purification	The antibody was affinity-purified from rabbit antiserum by affinity-chromatography using epitope-specific immunogen.
Clonality	Polyclonal
Concentration	1 mg/ml
Observed band	153kD
Human Gene ID	91074
Human Swiss-Prot Number	Q9BXX3
Alternative Names	ANKRD30A; Ankyrin repeat domain-containing protein 30A; Serologically defined breast cancer antigen NY-BR-1
Background	similarity:Contains 6 ANK repeats.,tissue specificity:Mainly expressed in breast and testis. A very faint signal is detected in placenta. Also expressed in many breast cancer cells.,

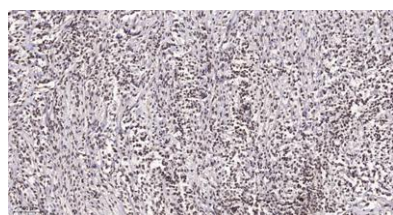




Western Blot analysis of various cells using ANKRD30A Polyclonal Antibody diluted at 1:2000 cells nucleus extracted by Minute TM Cytoplasmic and Nuclear Fractionation kit (SC-003, Inventbiotech, MN, USA).



Western blot analysis of lysates from 293 and COLO cells, using AN30A Antibody. The lane on the right is blocked with the synthesized peptide.



Immunohistochemical analysis of paraffin-embedded human Small intestinal stromal tumor. 1, Tris-EDTA, pH 9.0 was used for antigen retrieval. 2 Antibody was diluted at 1:200 (4° overnight). 3, Secondary antibody was diluted at 1:200 (room temperature, 45min).

