



FBLI1 rabbit pAb

Cat No.:ES16512

For research use only

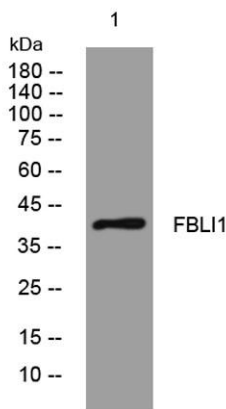
Overview

| | |
|---------------------------------|--|
| Product Name | FBLI1 rabbit pAb |
| Host species | Rabbit |
| Applications | WB |
| Species Cross-Reactivity | Human; Mouse |
| Recommended dilutions | WB 1: 500-2000 |
| Immunogen | Synthesized peptide derived from human FBLI1 AA range: 157-207 |
| Specificity | This antibody detects endogenous levels of FBLI1 at Human/Mouse |
| Formulation | Liquid in PBS containing 50% glycerol, 0.5% BSA and 0.02% sodium azide. |
| Storage | Store at -20°C. Avoid repeated freeze-thaw cycles. |
| Protein Name | FBLI1 |
| Gene Name | FBLIM1 FBLP1 |
| Cellular localization | Cell junction, focal adhesion . Cytoplasm, cytoskeleton, stress fiber . Associated with actin stress fiber at cell-ECM focal adhesion sites (PubMed:12679033, PubMed:18829455). Isoform 1 and isoform 3 are recruited and localized at actin stress fibers and |
| Purification | The antibody was affinity-purified from rabbit antiserum by affinity-chromatography using epitope-specific immunogen. |
| Clonality | Polyclonal |
| Concentration | 1 mg/ml |
| Observed band | |
| Human Gene ID | 54751 |
| Human Swiss-Prot Number | Q8WUP2 |
| Alternative Names | |
| Background | This gene encodes a protein with an N-terminal filamin-binding domain, a central proline-rich domain, and, multiple C-terminal LIM domains. This protein localizes at cell junctions and may link cell |





adhesion structures to the actin cytoskeleton. This protein may be involved in the assembly and stabilization of actin-filaments and likely plays a role in modulating cell adhesion, cell morphology and cell motility. This protein also localizes to the nucleus and may affect cardiomyocyte differentiation after binding with the CSX/NKX2-5 transcription factor. Alternative splicing results in multiple transcript variants encoding different isoforms. [provided by RefSeq, Jul 2008],



Western blot analysis of lysates from MCF-7 cells, primary antibody was diluted at 1:1000, 4° over night

