



FCERG rabbit pAb

Cat No.:ES16496

For research use only

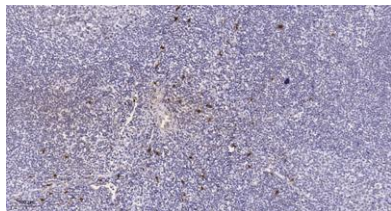
Overview

Product Name	FCERG rabbit pAb
Host species	Rabbit
Applications	IHC;IF
Species Cross-Reactivity	Human; Mouse;Rat
Recommended dilutions	IHC-p 1: 50-200
Immunogen	Synthesized peptide derived from human FCERG AA range: 31-81
Specificity	This antibody detects endogenous levels of FCERG at Human/Mouse/Rat
Formulation	Liquid in PBS containing 50% glycerol, 0.5% BSA and 0.02% sodium azide.
Storage	Store at -20°C. Avoid repeated freeze-thaw cycles.
Protein Name	FCERG
Gene Name	FCER1G
Cellular localization	Cell membrane ; Single-pass type I membrane protein .
Purification	The antibody was affinity-purified from rabbit antiserum by affinity-chromatography using epitope-specific immunogen.
Clonality	Polyclonal
Concentration	1 mg/ml
Observed band	
Human Gene ID	2207
Human Swiss-Prot Number	P30273
Alternative Names	
Background	The high affinity IgE receptor is a key molecule involved in allergic reactions. It is a tetramer composed of 1 alpha, 1 beta, and 2 gamma chains. The gamma chains are also subunits of other Fc receptors. [provided by RefSeq, Jul 2008],





ELK Biotechnology



Immunohistochemical analysis of paraffin-embedded human tonsil. 1, Tris-EDTA, pH 9.0 was used for antigen retrieval. 2 Antibody was diluted at 1:200 (4° overnight). 3, Secondary antibody was diluted at 1:200 (room temperature, 45 min).



+86-27-59760950

ELKbio@ELKbiotech.com

www.elkbiotech.com

23-2, No.388 Gaoxin 2nd Road, Wuhan East Lake Hi-tech Development Zone, Hubei, P.R.C