



FHL5 rabbit pAb

Cat No.:ES16474

For research use only

Overview

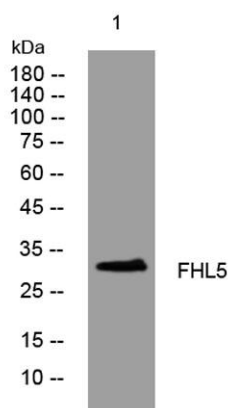
Product Name	FHL5 rabbit pAb
Host species	Rabbit
Applications	WB
Species Cross-Reactivity	Human; Mouse;Rat
Recommended dilutions	WB 1: 500-2000
Immunogen	Synthesized peptide derived from human FHL5 AA range: 129-179
Specificity	This antibody detects endogenous levels of FHL5 at Human/Mouse/Rat
Formulation	Liquid in PBS containing 50% glycerol, 0.5% BSA and 0.02% sodium azide.
Storage	Store at -20°C. Avoid repeated freeze-thaw cycles.
Protein Name	FHL5
Gene Name	FHL5 ACT
Cellular localization	Nucleus . Nuclei of round and elongated spermatids.
Purification	The antibody was affinity-purified from rabbit antiserum by affinity-chromatography using epitope-specific immunogen.
Clonality	Polyclonal
Concentration	1 mg/ml
Observed band	
Human Gene ID	9457
Human Swiss-Prot Number	Q5TD97
Alternative Names	
Background	The protein encoded by this gene is coordinately expressed with activator of cAMP-responsive element modulator (CREM). It is associated with CREM and confers a powerful transcriptional activation function. CREM acts as a transcription factor essential for the differentiation of spermatids into mature spermatozoa. There are multiple polyadenylation sites found in this gene. Polymorphisms in this gene may be associated with





ELK Biotechnology

susceptibility for migraine headaches. Alternative splicing results in multiple transcript variants encoding the same protein. [provided by RefSeq, Apr 2016],



Western blot analysis of lysates from HEK293 cells,
primary antibody was diluted at 1:1000, 4° over night



+86-27-59760950

ELKbio@ELKbiotech.com

www.elkbiotech.com

23-2, No.388 Gaoxin 2nd Road, Wuhan East Lake Hi-tech Development Zone, Hubei, P.R.C.