



ALDH3B1 rabbit pAb

Cat No.:ES1638

For research use only

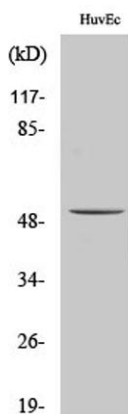
Overview

Product Name	ALDH3B1 rabbit pAb
Host species	Rabbit
Applications	WB;IHC;IF;ELISA
Species Cross-Reactivity	Human;Rat;Mouse;
Recommended dilutions	Western Blot: 1/500 - 1/2000. Immunohistochemistry: 1/100 - 1/300. ELISA: 1/40000. Not yet tested in other applications.
Immunogen	The antiserum was produced against synthesized peptide derived from human ALDH3B1. AA range:51-100
Specificity	ALDH3B1 Polyclonal Antibody detects endogenous levels of ALDH3B1 protein.
Formulation	Liquid in PBS containing 50% glycerol, 0.5% BSA and 0.02% sodium azide.
Storage	Store at -20°C. Avoid repeated freeze-thaw cycles.
Protein Name	Aldehyde dehydrogenase family 3 member B1
Gene Name	ALDH3B1
Cellular localization	Cell membrane ; Lipid-anchor . Primarily in the plasma membrane as well as in some punctate structures in the cytoplasm.
Purification	The antibody was affinity-purified from rabbit antiserum by affinity-chromatography using epitope-specific immunogen.
Clonality	Polyclonal
Concentration	1 mg/ml
Observed band	52kD
Human Gene ID	221
Human Swiss-Prot Number	P43353
Alternative Names	ALDH3B1; ALDH7; Aldehyde dehydrogenase family 3 member B1; Aldehyde dehydrogenase 7
Background	This gene encodes a member of the aldehyde dehydrogenase protein family. Aldehyde dehydrogenases are a family of isozymes that may



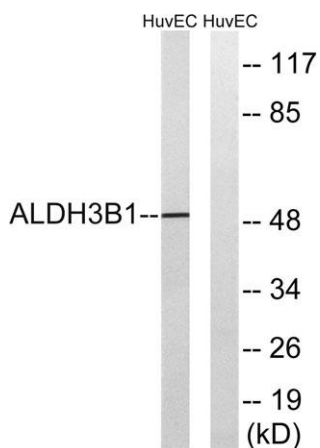
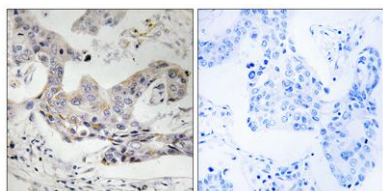


play a major role in the detoxification of aldehydes generated by alcohol metabolism and lipid peroxidation. The encoded protein is able to oxidize long-chain fatty aldehydes in vitro, and may play a role in protection from oxidative stress. Alternative splicing results in multiple transcript variants. [provided by RefSeq, Feb 2014],



Western Blot analysis of various cells using ALDH3B1 Polyclonal Antibody diluted at 1:500

Immunohistochemistry analysis of paraffin-embedded human breast carcinoma tissue, using ALDH3B1 Antibody. The picture on the right is blocked with the synthesized peptide.

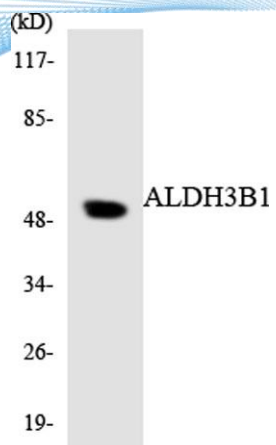


Western blot analysis of lysates from HUVEC cells, using ALDH3B1 Antibody. The lane on the right is blocked with the synthesized peptide.





ELK Biotechnology



Western blot analysis of the lysates from RAW264.7 cells using ALDH3B1 antibody.



+86-27-59760950

ELKbio@ELKbiotech.com

www.elkbiotech.com

23-2, No.388 Gaoxin 2nd Road, Wuhan East Lake Hi-tech Development Zone, Hubei, P.R.C