



# FSD2 rabbit pAb

Cat No.:ES16315

For research use only

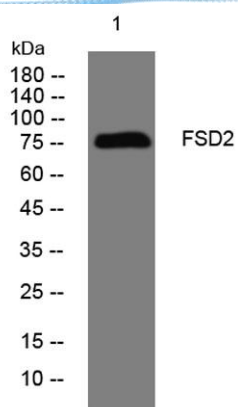
## Overview

<b>Product Name</b>	FSD2 rabbit pAb
<b>Host species</b>	Rabbit
<b>Applications</b>	WB
<b>Species Cross-Reactivity</b>	Human; Mouse
<b>Recommended dilutions</b>	WB 1: 500-2000
<b>Immunogen</b>	Synthesized peptide derived from human FSD2 AA range: 156-206
<b>Specificity</b>	This antibody detects endogenous levels of FSD2 at Human/Mouse
<b>Formulation</b>	Liquid in PBS containing 50% glycerol, 0.5% BSA and 0.02% sodium azide.
<b>Storage</b>	Store at -20°C. Avoid repeated freeze-thaw cycles.
<b>Protein Name</b>	FSD2
<b>Gene Name</b>	FSD2 SPRYD1
<b>Cellular localization</b>	Nucleus . Sarcoplasmic reticulum . Cytoplasm, perinuclear region . In skeletal muscles and striated muscles flanks Z-disks. Partially colocalizes with RYR2 in the sarcoplasmic reticulum. .
<b>Purification</b>	The antibody was affinity-purified from rabbit antiserum by affinity-chromatography using epitope-specific immunogen.
<b>Clonality</b>	Polyclonal
<b>Concentration</b>	1 mg/ml
<b>Observed band</b>	
<b>Human Gene ID</b>	123722
<b>Human Swiss-Prot Number</b>	A1L4K1
<b>Alternative Names</b>	
<b>Background</b>	This gene encodes a protein that belongs to the FN3/SPRY family of proteins. Alternate splicing results in multiple transcript variants. [provided by RefSeq, Aug 2013],





**ELK Biotechnology**



Western blot analysis of lysates from PC-12 cells, primary antibody was diluted at 1:1000, 4° over night



+86-27-59760950

[ELKbio@ELKbiotech.com](mailto:ELKbio@ELKbiotech.com)

[www.elkbiotech.com](http://www.elkbiotech.com)

23-2, No.388 Gaoxin 2nd Road, Wuhan East Lake Hi-tech Development Zone, Hubei, P.R.C.