

FXL18 rabbit pAb

Cat No.:ES16304

For research use only

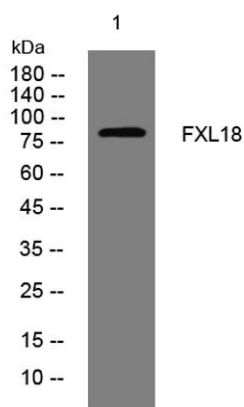
Overview

Product Name	FXL18 rabbit pAb
Host species	Rabbit
Applications	WB
Species Cross-Reactivity	Human;Rat;Mouse;
Recommended dilutions	WB 1: 500-2000
Immunogen	Synthesized peptide derived from human FXL18 AA range: 7-57
Specificity	This antibody detects endogenous levels of FXL18 at Human
Formulation	Liquid in PBS containing 50% glycerol, 0.5% BSA and 0.02% sodium azide.
Storage	Store at -20°C. Avoid repeated freeze-thaw cycles.
Protein Name	FXL18
Gene Name	FBXL18 FBL18
Cellular localization	
Purification	The antibody was affinity-purified from rabbit antiserum by affinity-chromatography using epitope-specific immunogen.
Clonality	Polyclonal
Concentration	1 mg/ml
Observed band	
Human Gene ID	80028
Human Swiss-Prot Number	Q96ME1
Alternative Names	
Background	The protein encoded by this gene is a member of a family of proteins that contain an approximately 40-amino acid F-box motif. This motif is important for interaction with SKP1 and for targeting some proteins for degradation. The encoded protein has been shown to control the cellular level of FBXL7, a protein that induces mitotic arrest, by targeting it for polyubiquitylation and proteasomal degradation. Members of the F-box protein family, such as





FBXL18, are characterized by an approximately 40-amino acid F-box motif. F-box proteins interact with SKP1 through the F box, and they interact with ubiquitination targets through other protein interaction domains. [provided by RefSeq, Mar 2016],



Western blot analysis of lysates from HpeG2 cells, primary antibody was diluted at 1:1000, 4°over night

