

GARNL1 (Phospho-T736) rabbit pAb

Cat No.:ES16245

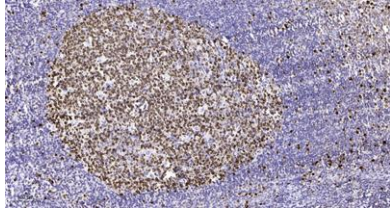
For research use only

Overview

Product Name	GARNL1 (Phospho-T736) rabbit pAb
Host species	Rabbit
Applications	IHC;IF;WB
Species Cross-Reactivity	Human; Mouse; Rat
Recommended dilutions	IHC-p 1:50-200, WB 1:500-2000
Immunogen	Synthesized peptide derived from human GARNL1 (Phospho-T736)
Specificity	This antibody detects endogenous phospho levels of GARNL1 (Phospho-T736) at Human, Mouse, Rat
Formulation	Liquid in PBS containing 50% glycerol, 0.5% BSA and 0.02% sodium azide.
Storage	Store at -20°C. Avoid repeated freeze-thaw cycles.
Protein Name	GARNL1 (Phospho-T736)
Gene Name	RALGAPA1 GARNL1 KIAA0884 TULIP1
Cellular localization	Cytoplasm . Nucleus . Translocated to the nucleus, when associated with TCF3/E12. .
Purification	The antibody was affinity-purified from rabbit antiserum by affinity-chromatography using epitope-specific immunogen.
Clonality	Polyclonal
Concentration	1 mg/ml
Observed band	220kD
Human Gene ID	253959
Human Swiss-Prot Number	Q6GYQ0
Alternative Names	Ral GTPase-activating protein subunit alpha-1 (GAP-related-interacting partner to E12;GRIPE;GTPase-activating Rap/Ran-GAP domain-like 1;Tuberin-like protein 1;p240)
Background	This gene encodes a major subunit of the RAL-GTPase activating protein. A similar protein in mouse binds E12, a transcriptional regulator of immunoglobulin genes. The mouse protein also functions in skeletal muscle by binding to the



regulatory 14-3-3 proteins upon stimulation with insulin or muscle contraction. A pseudogene of this gene has been identified on chromosome 9. [provided by RefSeq, Oct 2016],



Immunohistochemical analysis of paraffin-embedded human tonsil. 1, Antibody was diluted at 1:200(4° overnight). 2, Tris-EDTA,pH9.0 was used for antigen retrieval. 3,Secondary antibody was diluted at 1:200(room temperature, 45min).

