

# GBRA5 rabbit pAb

Cat No.:ES16227

For research use only

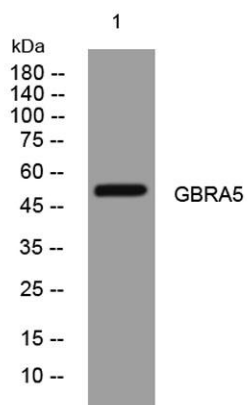
## Overview

Product Name	GBRA5 rabbit pAb
Host species	Rabbit
Applications	WB
Species Cross-Reactivity	Human; Mouse;Rat
Recommended dilutions	WB 1: 500-2000
Immunogen	Synthesized peptide derived from human GBRA5 AA range: 234-284
Specificity	This antibody detects endogenous levels of GBRA5 at Human/Mouse/Rat
Formulation	Liquid in PBS containing 50% glycerol, 0.5% BSA and 0.02% sodium azide.
Storage	Store at -20°C. Avoid repeated freeze-thaw cycles.
Protein Name	GBRA5
Gene Name	GABRA5
Cellular localization	Cell junction, synapse, postsynaptic cell membrane ; Multi-pass membrane protein. Cell membrane ; Multi-pass membrane protein.
Purification	The antibody was affinity-purified from rabbit antiserum by affinity-chromatography using epitope-specific immunogen.
Clonality	Polyclonal
Concentration	1 mg/ml
Observed band	
Human Gene ID	2558
Human Swiss-Prot Number	P31644
Alternative Names	
Background	GABA is the major inhibitory neurotransmitter in the mammalian brain where it acts at GABA-A receptors, which are ligand-gated chloride channels. Chloride conductance of these channels can be modulated by agents such as benzodiazepines that bind to the GABA-A receptor. At least 16 distinct subunits of GABA-A receptors have been identified. Transcript





variants utilizing three different alternative non-coding first exons have been described. [provided by RefSeq, Jul 2008],



Western blot analysis of lysates from U2OS cells, primary antibody was diluted at 1:1000, 4°over night

