



GCC1 rabbit pAb

Cat No.:ES16224

For research use only

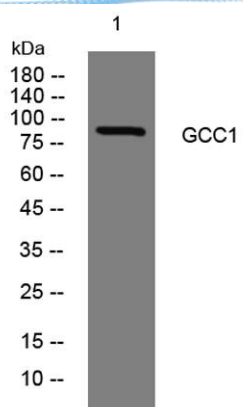
Overview

Product Name	GCC1 rabbit pAb
Host species	Rabbit
Applications	WB
Species Cross-Reactivity	Human; Mouse
Recommended dilutions	WB 1:500-2000
Immunogen	Synthesized peptide derived from human GCC1 AA range: 632-682
Specificity	This antibody detects endogenous levels of GCC1 at Human/Mouse
Formulation	Liquid in PBS containing 50% glycerol, 0.5% BSA and 0.02% sodium azide.
Storage	Store at -20°C. Avoid repeated freeze-thaw cycles.
Protein Name	GCC1
Gene Name	GCC1
Cellular localization	Cytoplasm . Golgi apparatus membrane ; Peripheral membrane protein .
Purification	The antibody was affinity-purified from rabbit antiserum by affinity-chromatography using epitope-specific immunogen.
Clonality	Polyclonal
Concentration	1 mg/ml
Observed band	85kD
Human Gene ID	79571
Human Swiss-Prot Number	Q96CN9
Alternative Names	GRIP and coiled-coil domain-containing protein 1 (Golgi coiled-coil protein 1)
Background	The protein encoded by this gene is a peripheral membrane protein. It is sensitive to brefeldin A. This encoded protein contains a GRIP domain which is thought to be used in targeting. It may play a role in the organization of trans-Golgi network subcompartment involved with membrane transport. [provided by RefSeq, Jul 2008],





ELK Biotechnology



Western blot analysis of lysates from HCT116 cells,
primary antibody was diluted at 1:1000, 4° over night



+86-27-59760950

ELKbio@ELKbiotech.com

www.elkbiotech.com

23-2, No.388 Gaoxin 2nd Road, Wuhan East Lake Hi-tech Development Zone, Hubei, P.R.C