



GDPD1 rabbit pAb

Cat No.:ES16217

For research use only

Overview

Product Name	GDPD1 rabbit pAb
Host species	Rabbit
Applications	WB
Species Cross-Reactivity	Human; Mouse;Rat
Recommended dilutions	WB 1: 500-2000
Immunogen	Synthesized peptide derived from human GDPD1 AA range: 247-297
Specificity	This antibody detects endogenous levels of GDPD1 at Human/Mouse/Rat
Formulation	Liquid in PBS containing 50% glycerol, 0.5% BSA and 0.02% sodium azide.
Storage	Store at -20°C. Avoid repeated freeze-thaw cycles.
Protein Name	GDPD1
Gene Name	GDPD1 GDE4
Cellular localization	Cytoplasm . Membrane ; Multi-pass membrane protein . Cytoplasm, perinuclear region . Endoplasmic reticulum . Concentrated at the perinuclear region and the cell periphery (PubMed:18991142). .
Purification	The antibody was affinity-purified from rabbit antiserum by affinity-chromatography using epitope-specific immunogen.
Clonality	Polyclonal
Concentration	1 mg/ml
Observed band	
Human Gene ID	284161
Human Swiss-Prot Number	Q8N9F7
Alternative Names	
Background	This gene encodes a member of the glycerophosphodiester phosphodiesterase family of enzymes that catalyze the hydrolysis of deacylated glycerophospholipids to glycerol phosphate and alcohol. The encoded protein is localized to the

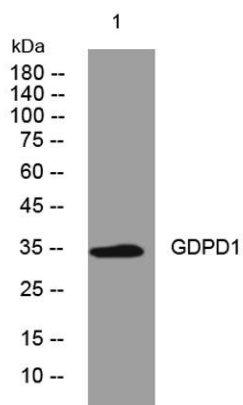




ELK Biotechnology

cytoplasm and concentrates near the perinuclear region. Alternative splicing results in multiple transcript variants. [provided by RefSeq, Oct 2009],

Western blot analysis of lysates from VEC cells, primary antibody was diluted at 1:1000, 4° over night



+86-27-59760950

ELKbio@ELKbiotech.com

www.elkbiotech.com

23-2, No.388 Gaoxin 2nd Road, Wuhan East Lake Hi-tech Development Zone, Hubei, P.R.C