

GGEE1 rabbit pAb

Cat No.:ES16192

For research use only

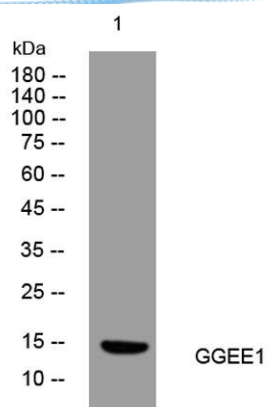
Overview

Product Name	GGEE1 rabbit pAb
Host species	Rabbit
Applications	WB
Species Cross-Reactivity	Human;Rat;Mouse;
Recommended dilutions	WB 1: 500-2000
Immunogen	Synthesized peptide derived from human GGEE1 AA range: 35-85
Specificity	This antibody detects endogenous levels of GGEE1 at Human
Formulation	Liquid in PBS containing 50% glycerol, 0.5% BSA and 0.02% sodium azide.
Storage	Store at -20°C. Avoid repeated freeze-thaw cycles.
Protein Name	GGEE1
Gene Name	PAGE5 GAGEE1
Cellular localization	
Purification	The antibody was affinity-purified from rabbit antiserum by affinity-chromatography using epitope-specific immunogen.
Clonality	Polyclonal
Concentration	1 mg/ml
Observed band	
Human Gene ID	90737
Human Swiss-Prot Number	Q96GU1
Alternative Names	
Background	This gene is a member of family of proteins that are expressed in a variety of tumors and in some fetal and reproductive tissues. The encoded protein may protect cells from programmed cell death. Multiple alternatively spliced transcript variants encoding distinct isoforms have been found. [provided by RefSeq, Jan 2015],





ELK Biotechnology



Western blot analysis of lysates from HpeG2 cells, primary antibody was diluted at 1:1000, 4° over night



+86-27-59760950

ELKbio@ELKbiotech.com

www.elkbiotech.com

23-2, No.388 Gaoxin 2nd Road, Wuhan East Lake Hi-tech Development Zone, Hubei, P.R.C.