



GGT2 rabbit pAb

Cat No.:ES16189

For research use only

Overview

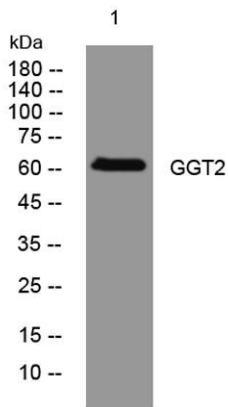
Product Name	GGT2 rabbit pAb
Host species	Rabbit
Applications	WB
Species Cross-Reactivity	Human;Rat;Mouse;
Recommended dilutions	WB 1:500-2000
Immunogen	Synthesized peptide derived from human GGT2 AA range: 89-139
Specificity	This antibody detects endogenous levels of GGT2 at Human
Formulation	Liquid in PBS containing 50% glycerol, 0.5% BSA and 0.02% sodium azide.
Storage	Store at -20°C. Avoid repeated freeze-thaw cycles.
Protein Name	GGT2
Gene Name	GGT2
Cellular localization	Cytoplasm, perinuclear region . Endoplasmic reticulum . Co-localizes with calnexin in the endoplasmic reticulum.
Purification	The antibody was affinity-purified from rabbit antiserum by affinity-chromatography using epitope-specific immunogen.
Clonality	Polyclonal
Concentration	1 mg/ml
Observed band	60kD
Human Gene ID	
Human Swiss-Prot Number	P36268
Alternative Names	Gamma-glutamyltranspeptidase 2 (GGT 2) (EC 2.3.2.2) (Gamma-glutamyltransferase 2) (Glutathione hydrolase 2) (EC 3.4.19.13) [Cleaved into: Gamma-glutamyltranspeptidase 2 heavy chain; Gamma-glutamyltranspeptidase 2 light chain]
Background	GGT2 belongs to the gamma-glutamyltransferase (GGT; EC 2.3.2.2) gene family. GGT is a membrane-bound extracellular enzyme that cleaves





ELK Biotechnology

gamma-glutamyl peptide bonds in glutathione and other peptides and transfers the gamma-glutamyl moiety to acceptors. GGT is also key to glutathione homeostasis because it provides substrates for glutathione synthesis (Heisterkamp et al., 2008 [PubMed 18357469]).[supplied by OMIM, Oct 2008],



Western blot analysis of lysates from AD293 cells, primary antibody was diluted at 1:1000, 4° over night



+86-27-59760950

ELKbio@ELKbiotech.com

www.elkbiotech.com

23-2, No.388 Gaoxin 2nd Road, Wuhan East Lake Hi-tech Development Zone, Hubei, P.R.C