

GLYM rabbit pAb

Cat No.:ES16153

For research use only

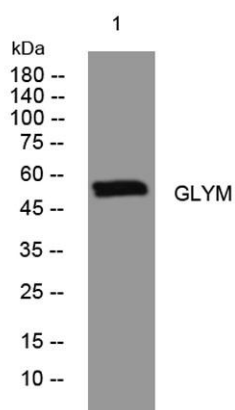
Overview

Product Name	GLYM rabbit pAb
Host species	Rabbit
Applications	WB
Species Cross-Reactivity	Human;Rat;Mouse;
Recommended dilutions	WB 1: 500-2000
Immunogen	Synthesized peptide derived from human GLYM AA range: 122-172
Specificity	This antibody detects endogenous levels of GLYM at Human
Formulation	Liquid in PBS containing 50% glycerol, 0.5% BSA and 0.02% sodium azide.
Storage	Store at -20°C. Avoid repeated freeze-thaw cycles.
Protein Name	GLYM
Gene Name	SHMT2
Cellular localization	Mitochondrion . Mitochondrion matrix, mitochondrion nucleoid . Mitochondrion inner membrane . Cytoplasm . Nucleus . Mainly localizes in the mitochondrion. Also found in the cytoplasm and nucleus as part of the BRISC complex (PubMed:24075985). .
Purification	The antibody was affinity-purified from rabbit antiserum by affinity-chromatography using epitope-specific immunogen.
Clonality	Polyclonal
Concentration	1 mg/ml
Observed band	
Human Gene ID	6472
Human Swiss-Prot Number	P34897
Alternative Names	
Background	This gene encodes the mitochondrial form of a pyridoxal phosphate-dependent enzyme that catalyzes the reversible reaction of serine and tetrahydrofolate to glycine and 5,10-methylene





tetrahydrofolate. The encoded product is primarily responsible for glycine synthesis. The activity of the encoded protein has been suggested to be the primary source of intracellular glycine. The gene which encodes the cytosolic form of this enzyme is located on chromosome 17. Alternative splicing results in multiple transcript variants. [provided by RefSeq, Oct 2009],



Western blot analysis of lysates from A549 cells, primary antibody was diluted at 1:1000, 4° over night

