

GMCLL rabbit pAb

Cat No.:ES16149

For research use only

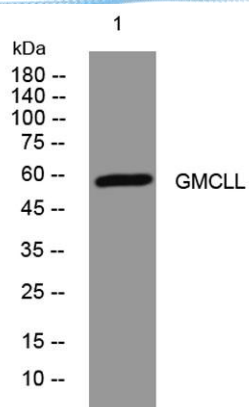
Overview

Product Name	GMCLL rabbit pAb
Host species	Rabbit
Applications	WB
Species Cross-Reactivity	Human; Mouse
Recommended dilutions	WB 1: 500-2000
Immunogen	Synthesized peptide derived from human GMCLL AA range: 20-70
Specificity	This antibody detects endogenous levels of GMCLL at Human/Mouse
Formulation	Liquid in PBS containing 50% glycerol, 0.5% BSA and 0.02% sodium azide.
Storage	Store at -20°C. Avoid repeated freeze-thaw cycles.
Protein Name	GMCLL
Gene Name	GMCL1P1 GCL GMCL1L
Cellular localization	Nucleus matrix .
Purification	The antibody was affinity-purified from rabbit antiserum by affinity-chromatography using epitope-specific immunogen.
Clonality	Polyclonal
Concentration	1 mg/ml
Observed band	
Human Gene ID	
Human Swiss-Prot Number	Q8NEA9
Alternative Names	
Background	This locus shares a high degree of identity with the multi-exon germ cell-less gene on chromosome 2. Despite its single-exon nature, this chromosome 5 locus contains an open reading frame that could putatively encode a full-length germ cell-less related protein. [provided by RefSeq, Jul 2008],





ELK Biotechnology



Western blot analysis of lysates from DU145 cells, primary antibody was diluted at 1:1000, 4° over night



+86-27-59760950

ELKbio@ELKbiotech.com

www.elkbiotech.com

23-2, No.388 Gaoxin 2nd Road, Wuhan East Lake Hi-tech Development Zone, Hubei, P.R.C.