



# GNG12 Polyclona Antibody

Cat No.:ES16142

For research use only

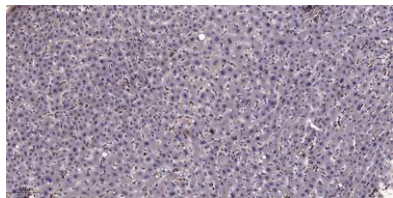
## Overview

<b>Product Name</b>	GNG12 Polyclona Antibody
<b>Host species</b>	Rabbit
<b>Applications</b>	IHC; ELISA
<b>Species Cross-Reactivity</b>	Human; Mouse
<b>Recommended dilutions</b>	IHC-p 1:50-200, ELISA(peptide)1:5000-20000
<b>Immunogen</b>	Synthesized peptide derived from human GNG12 AA range: 1-50
<b>Specificity</b>	This antibody detects endogenous levels of human GNG12
<b>Formulation</b>	Liquid in PBS containing 50% glycerol, 0.5% BSA and 0.02% sodium azide.
<b>Storage</b>	Store at -20°C. Avoid repeated freeze-thaw cycles.
<b>Protein Name</b>	GNG12
<b>Gene Name</b>	GNG12
<b>Cellular localization</b>	Cell membrane ; Lipid-anchor ; Cytoplasmic side .
<b>Purification</b>	The antibody was affinity-purified from rabbit antiserum by affinity-chromatography using epitope-specific immunogen.
<b>Clonality</b>	Polyclonal
<b>Concentration</b>	1 mg/ml
<b>Observed band</b>	
<b>Human Gene ID</b>	55970
<b>Human Swiss-Prot Number</b>	Q9UBI6
<b>Alternative Names</b>	Guanine nucleotide-binding protein G(I)/G(S)/G(O) subunit gamma-12
<b>Background</b>	function:Guanine nucleotide-binding proteins (G proteins) are involved as a modulator or transducer in various transmembrane signaling systems. The beta and gamma chains are required for the GTPase activity, for replacement of GDP by GTP, and for G protein-effector interaction.,similarity:Belongs to the G protein gamma family.,subunit:G proteins are composed of 3 units, alpha, beta and gamma.,





**ELK Biotechnology**



Immunohistochemical analysis of paraffin-embedded human liver cancer. 1, Antibody was diluted at 1:200(4° overnight). 2, Tris-EDTA,pH9.0 was used for antigen retrieval. 3,Secondary antibody was diluted at 1:200(room temperature, 45min).



+86-27-59760950

[ELKbio@ELKbiotech.com](mailto:ELKbio@ELKbiotech.com)

[www.elkbiotech.com](http://www.elkbiotech.com)

23-2, No.388 Gaoxin 2nd Road,Wuhan East Lake Hi-tech Development Zone, Hubei , P.R.C