



GRASP rabbit pAb

Cat No.:ES15912

For research use only

Overview

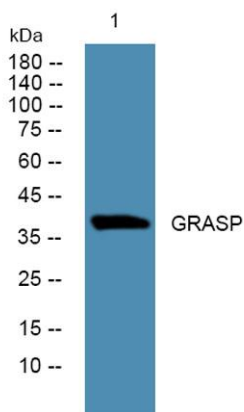
Product Name	GRASP rabbit pAb
Host species	Rabbit
Applications	IHC;IF;WB
Species Cross-Reactivity	Human; Mouse; Rat
Recommended dilutions	IHC-p 1:50-200, WB 1:500-2000
Immunogen	Synthesized peptide derived from human GRASP
Specificity	This antibody detects endogenous levels of human GRASP
Formulation	Liquid in PBS containing 50% glycerol, 0.5% BSA and 0.02% sodium azide.
Storage	Store at -20°C. Avoid repeated freeze-thaw cycles.
Protein Name	GRASP
Gene Name	GRASP
Cellular localization	Cytoplasm, perinuclear region . Cell membrane ; Peripheral membrane protein ; Cytoplasmic side . Cell junction, synapse, postsynaptic cell membrane .
Purification	The antibody was affinity-purified from rabbit antiserum by affinity-chromatography using epitope-specific immunogen.
Clonality	Polyclonal
Concentration	1 mg/ml
Observed band	38kD
Human Gene ID	160622
Human Swiss-Prot Number	Q7Z6J2
Alternative Names	General receptor for phosphoinositides 1-associated scaffold protein (GRP1-associated scaffold protein)
Background	This gene encodes a protein that functions as a molecular scaffold, linking receptors, including group 1 metabotropic glutamate receptors, to neuronal proteins. The encoded protein contains conserved domains, including a leucine zipper sequence, PDZ domain and a C-terminal PDZ-binding motif. Alternately spliced transcript





variants have been observed for this gene.[provided by RefSeq, Dec 2012],

Western blot analysis of lysates from PC12 cells, primary antibody was diluted at 1:1000, 4° over night



Immunohistochemical analysis of paraffin-embedded human Colon cancer. 1, Antibody was diluted at 1:200(4° overnight). 2, Tris-EDTA,pH9.0 was used for antigen retrieval. 3,Secondary antibody was diluted at 1:200(room temperature, 45min).

