



# GRCR1 rabbit pAb

Cat No.:ES15909

For research use only

## Overview

<b>Product Name</b>	GRCR1 rabbit pAb
<b>Host species</b>	Rabbit
<b>Applications</b>	WB
<b>Species Cross-Reactivity</b>	Human; Mouse
<b>Recommended dilutions</b>	WB 1: 500-2000
<b>Immunogen</b>	Synthesized peptide derived from human GRCR1 AA range: 132-182
<b>Specificity</b>	This antibody detects endogenous levels of GRCR1 at Human/Mouse
<b>Formulation</b>	Liquid in PBS containing 50% glycerol, 0.5% BSA and 0.02% sodium azide.
<b>Storage</b>	Store at -20°C. Avoid repeated freeze-thaw cycles.
<b>Protein Name</b>	GRCR1
<b>Gene Name</b>	GRXCR1 DFNB25
<b>Cellular localization</b>	Cell projection, stereocilium . Cell projection, microvillus . Cell projection, kinocilium . In the inner ear, localized to stereocilia, apical microvilli of sensory cells and kinocilia. .
<b>Purification</b>	The antibody was affinity-purified from rabbit antiserum by affinity-chromatography using epitope-specific immunogen.
<b>Clonality</b>	Polyclonal
<b>Concentration</b>	1 mg/ml
<b>Observed band</b>	
<b>Human Gene ID</b>	389207
<b>Human Swiss-Prot Number</b>	A8MXD5
<b>Alternative Names</b>	
<b>Background</b>	This gene is one of 60 loci associated with autosomal-recessive nonsyndromic hearing impairment. This gene encodes a protein which contains GRX-like domains; these domains play a role in the S-glutathionylation of proteins and may be involved in actin organization in hair cells.

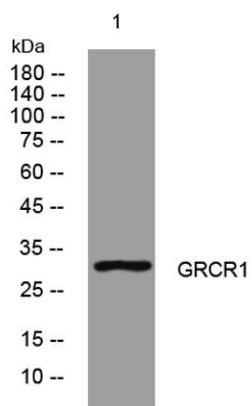




**ELK Biotechnology**

[provided by RefSeq, Sep 2010],

Western blot analysis of lysates from PC-12 cells, primary antibody was diluted at 1:1000, 4° over night



+86-27-59760950

[ELKbio@ELKbiotech.com](mailto:ELKbio@ELKbiotech.com)

[www.elkbiotech.com](http://www.elkbiotech.com)

23-2, No.388 Gaoxin 2nd Road, Wuhan East Lake Hi-tech Development Zone, Hubei, P.R.C