



GRSF1 rabbit pAb

Cat No.:ES15889

For research use only

Overview

Product Name	GRSF1 rabbit pAb
Host species	Rabbit
Applications	WB
Species Cross-Reactivity	Human; Mouse
Recommended dilutions	WB 1: 500-2000
Immunogen	Synthesized peptide derived from human GRSF1 AA range: 302-352
Specificity	This antibody detects endogenous levels of GRSF1 at Human/Mouse
Formulation	Liquid in PBS containing 50% glycerol, 0.5% BSA and 0.02% sodium azide.
Storage	Store at -20°C. Avoid repeated freeze-thaw cycles.
Protein Name	GRSF1
Gene Name	GRSF1
Cellular localization	[Isoform 1]: Mitochondrion matrix . Localizes to mitochondrial RNA granules found in close proximity to the mitochondrial nucleoids. .; [Isoform 2]: Cytoplasm .
Purification	The antibody was affinity-purified from rabbit antiserum by affinity-chromatography using epitope-specific immunogen.
Clonality	Polyclonal
Concentration	1 mg/ml
Observed band	
Human Gene ID	2926
Human Swiss-Prot Number	Q12849
Alternative Names	
Background	The protein encoded by this gene is a cellular protein that binds RNAs containing the G-rich element. The protein is localized in the cytoplasm, and has been shown to stimulate translation of viral mRNAs in vitro. Multiple transcript variants encoding different isoforms have been found for this

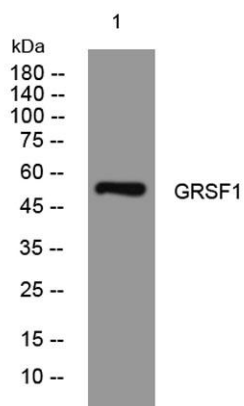




ELK Biotechnology

gene. [provided by RefSeq, Jul 2008],

Western blot analysis of lysates from 293T cells, primary antibody was diluted at 1:1000, 4° over night



+86-27-59760950

ELKbio@ELKbiotech.com

www.elkbiotech.com

23-2, No.388 Gaoxin 2nd Road, Wuhan East Lake Hi-tech Development Zone, Hubei, P.R.C