

GTD2A rabbit pAb

Cat No.:ES15862

For research use only

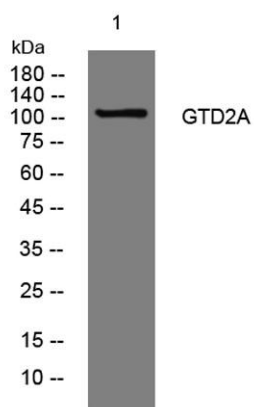
Overview

Product Name	GTD2A rabbit pAb
Host species	Rabbit
Applications	WB
Species Cross-Reactivity	Human;Rat;Mouse;
Recommended dilutions	WB 1:500-2000
Immunogen	Synthesized peptide derived from human GTD2A AA range: 529-579
Specificity	This antibody detects endogenous levels of GTD2A at Human
Formulation	Liquid in PBS containing 50% glycerol, 0.5% BSA and 0.02% sodium azide.
Storage	Store at -20°C. Avoid repeated freeze-thaw cycles.
Protein Name	GTD2A
Gene Name	GTF2IRD2 GTF2IRD2A
Cellular localization	Nucleus.
Purification	The antibody was affinity-purified from rabbit antiserum by affinity-chromatography using epitope-specific immunogen.
Clonality	Polyclonal
Concentration	1 mg/ml
Observed band	105kD
Human Gene ID	84163
Human Swiss-Prot Number	Q86UP8
Alternative Names	General transcription factor II-I repeat domain-containing protein 2A (GTF2I repeat domain-containing protein 2A) (Transcription factor GTF2IRD2-alpha)
Background	This gene is one of several closely related genes on chromosome 7 encoding proteins containing helix-loop-helix motifs. These proteins may function as regulators of transcription. The encoded protein is unique in that its C-terminus is derived from CHARLIE8 transposable element sequence. This





gene is located in a region of chromosome 7 that is deleted in Williams-Beuren syndrome, and loss of this locus may contribute to the cognitive phenotypes observed in this disease. Alternative splicing results in multiple transcript variants. [provided by RefSeq, Jul 2013],



Western blot analysis of lysates from HpeG2 cells, primary antibody was diluted at 1:1000, 4° over night

