

GTD2B rabbit pAb

Cat No.:ES15861

For research use only

Overview

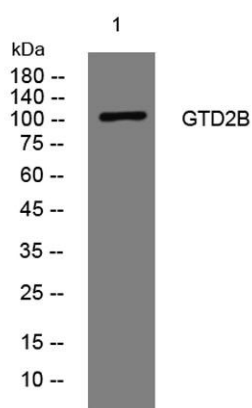
Product Name	GTD2B rabbit pAb
Host species	Rabbit
Applications	WB
Species Cross-Reactivity	Human;Rat;Mouse;
Recommended dilutions	WB 1:500-2000
Immunogen	Synthesized peptide derived from human GTD2B AA range: 730-780
Specificity	This antibody detects endogenous levels of GTD2B at Human
Formulation	Liquid in PBS containing 50% glycerol, 0.5% BSA and 0.02% sodium azide.
Storage	Store at -20°C. Avoid repeated freeze-thaw cycles.
Protein Name	GTD2B
Gene Name	GTF2IRD2B
Cellular localization	Nucleus.
Purification	The antibody was affinity-purified from rabbit antiserum by affinity-chromatography using epitope-specific immunogen.
Clonality	Polyclonal
Concentration	1 mg/ml
Observed band	105kD
Human Gene ID	389524
Human Swiss-Prot Number	Q6EKJ0
Alternative Names	General transcription factor II-I repeat domain-containing protein 2B (GTF2I repeat domain-containing protein 2B) (Transcription factor GTF2IRD2-beta)
Background	This gene encodes a glycosylated phosphoprotein with a leucine zipper motif, two helix-loop-helix motifs (I repeats) that are similar to domains found in the TFII-I family of transcription factors, one CHARLIE8 transposable element-like sequence, and a BED zinc finger. This gene lies within a region that





is deleted in Williams-Beuren syndrome.

Alternatively spliced variants which encode different protein isoforms have been described; however, not all variants have been fully characterized. [provided by RefSeq, Jul 2008],



Western blot analysis of lysates from MCF-7 cells, primary antibody was diluted at 1:1000, 4° over night

