



# HIP1R rabbit pAb

Cat No.:ES15759

For research use only

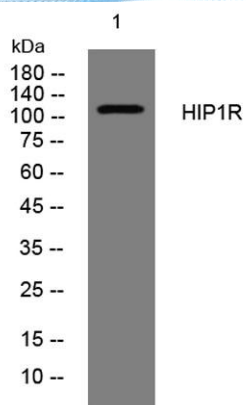
## Overview

<b>Product Name</b>	HIP1R rabbit pAb
<b>Host species</b>	Rabbit
<b>Applications</b>	WB
<b>Species Cross-Reactivity</b>	Human; Mouse
<b>Recommended dilutions</b>	WB 1: 500-2000
<b>Immunogen</b>	Synthesized peptide derived from human HIP1R AA range: 554-604
<b>Specificity</b>	This antibody detects endogenous levels of HIP1R at Human/Mouse
<b>Formulation</b>	Liquid in PBS containing 50% glycerol, 0.5% BSA and 0.02% sodium azide.
<b>Storage</b>	Store at -20°C. Avoid repeated freeze-thaw cycles.
<b>Protein Name</b>	HIP1R
<b>Gene Name</b>	HIP1R HIP12 KIAA0655
<b>Cellular localization</b>	Cytoplasm, perinuclear region. Endomembrane system. Cytoplasmic vesicle, clathrin-coated vesicle membrane. Membrane-associated protein, mainly localized at the endocytic compartments and in the perinuclear region.
<b>Purification</b>	The antibody was affinity-purified from rabbit antiserum by affinity-chromatography using epitope-specific immunogen.
<b>Clonality</b>	Polyclonal
<b>Concentration</b>	1 mg/ml
<b>Observed band</b>	
<b>Human Gene ID</b>	9026
<b>Human Swiss-Prot Number</b>	O75146
<b>Alternative Names</b>	
<b>Background</b>	





**ELK Biotechnology**



Western blot analysis of lysates from KB cells, primary antibody was diluted at 1:1000, 4° over night



+86-27-59760950

ELKbio@ELKbiotech.com

www.elkbiotech.com

23-2, No.388 Gaoxin 2nd Road, Wuhan East Lake Hi-tech Development Zone, Hubei, P.R.C