

# HOME3 rabbit pAb

Cat No.:ES15689

For research use only

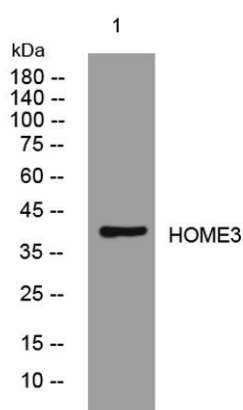
## Overview

Product Name	HOME3 rabbit pAb
Host species	Rabbit
Applications	WB
Species Cross-Reactivity	Human; Mouse;Rat
Recommended dilutions	WB 1: 500-2000
Immunogen	Synthesized peptide derived from human HOME3 AA range: 243-293
Specificity	This antibody detects endogenous levels of HOME3 at Human/Mouse/Rat
Formulation	Liquid in PBS containing 50% glycerol, 0.5% BSA and 0.02% sodium azide.
Storage	Store at -20°C. Avoid repeated freeze-thaw cycles.
Protein Name	HOME3
Gene Name	HOMER3
Cellular localization	Cytoplasm . Cell junction, synapse, postsynaptic density . Cell junction, synapse . Postsynaptic density of neuronal cells. .
Purification	The antibody was affinity-purified from rabbit antiserum by affinity-chromatography using epitope-specific immunogen.
Clonality	Polyclonal
Concentration	1 mg/ml
Observed band	
Human Gene ID	9454
Human Swiss-Prot Number	Q9NSC5
Alternative Names	
Background	This gene encodes a member of the HOMER family of postsynaptic density scaffolding proteins that share a similar domain structure consisting of an N-terminal Enabled/vasodilator-stimulated phosphoprotein homology 1 domain which mediates protein-protein interactions, and a carboxy-terminal coiled-coil domain and two leucine





zipper motifs that are involved in self-oligomerization. The encoded protein binds numerous other proteins including group I metabotropic glutamate receptors, inositol 1,4,5-trisphosphate receptors and amyloid precursor proteins and has been implicated in diverse biological functions such as neuronal signaling, T-cell activation and trafficking of amyloid beta peptides. Alternative splicing results in multiple transcript variants.[provided by RefSeq, Mar 2009],



Western blot analysis of lysates from 3T3 cells, primary antibody was diluted at 1:1000, 4°over night

