

HSF2B rabbit pAb

Cat No.:ES15599

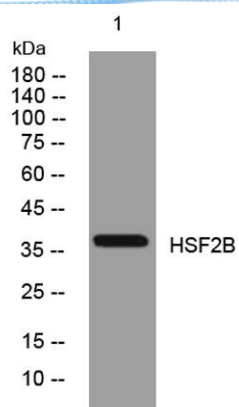
For research use only

Overview

Product Name	HSF2B rabbit pAb
Host species	Rabbit
Applications	WB
Species Cross-Reactivity	Human;Rat;Mouse;
Recommended dilutions	WB 1: 500-2000
Immunogen	Synthesized peptide derived from human HSF2B AA range: 201-251
Specificity	This antibody detects endogenous levels of HSF2B at Human
Formulation	Liquid in PBS containing 50% glycerol, 0.5% BSA and 0.02% sodium azide.
Storage	Store at -20°C. Avoid repeated freeze-thaw cycles.
Protein Name	HSF2B
Gene Name	HSF2BP
Cellular localization	Cytoplasm . Chromosome . Localizes on double-strand breaks (DSBs) in mitotic and meiotic chromosomes. .
Purification	The antibody was affinity-purified from rabbit antiserum by affinity-chromatography using epitope-specific immunogen.
Clonality	Polyclonal
Concentration	1 mg/ml
Observed band	
Human Gene ID	11077
Human Swiss-Prot Number	O75031
Alternative Names	
Background	HSF2 binding protein (HSF2BP) associates with HSF2. The interaction occurs between the trimerization domain of HSF2 and the amino terminal hydrophilic region of HSF2BP that comprises two leucine zipper motifs. HSF2BP may therefore be involved in modulating HSF2 activation. [provided by RefSeq, Jul 2008],



ELK Biotechnology



Western blot analysis of lysates from 293T cells, primary antibody was diluted at 1:1000, 4° over night