

HSH2D rabbit pAb

Cat No.:ES15597

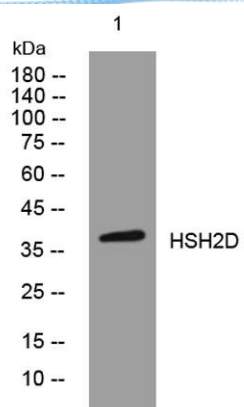
For research use only

Overview

Product Name	HSH2D rabbit pAb
Host species	Rabbit
Applications	WB
Species Cross-Reactivity	Human; Mouse
Recommended dilutions	WB 1:500-2000
Immunogen	Synthesized peptide derived from human HSH2D AA range: 288-338
Specificity	This antibody detects endogenous levels of HSH2D at Human/Mouse
Formulation	Liquid in PBS containing 50% glycerol, 0.5% BSA and 0.02% sodium azide.
Storage	Store at -20°C. Avoid repeated freeze-thaw cycles.
Protein Name	HSH2D
Gene Name	HSH2D ALX
Cellular localization	Cytoplasm. Nucleus.
Purification	The antibody was affinity-purified from rabbit antiserum by affinity-chromatography using epitope-specific immunogen.
Clonality	Polyclonal
Concentration	1 mg/ml
Observed band	38kD
Human Gene ID	84941
Human Swiss-Prot Number	Q96JZ2
Alternative Names	Hematopoietic SH2 domain-containing protein (Hematopoietic SH2 protein) (Adaptor in lymphocytes of unknown function X)
Background	T-cell activation requires 2 signals: recognition of antigen by the T-cell receptor (see TCR; MIM 186880) and a costimulatory signal provided primarily by CD28 (MIM 186760) in naive T cells. HSH2 is a target of both of these signaling pathways (Greene et al., 2003 [PubMed 12960172]).[supplied by OMIM, Mar 2008],



ELK Biotechnology



Western blot analysis of lysates from HpeG2 cells, primary antibody was diluted at 1:1000, 4° over night