

IDI1 rabbit pAb

Cat No.:ES15535

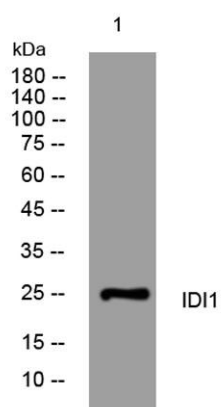
For research use only

Overview

Product Name	IDI1 rabbit pAb
Host species	Rabbit
Applications	WB
Species Cross-Reactivity	Human; Mouse;Rat
Recommended dilutions	WB 1: 500-2000
Immunogen	Synthesized peptide derived from human IDI1 AA range: 103-153
Specificity	This antibody detects endogenous levels of IDI1 at Human/Mouse/Rat
Formulation	Liquid in PBS containing 50% glycerol, 0.5% BSA and 0.02% sodium azide.
Storage	Store at -20°C. Avoid repeated freeze-thaw cycles.
Protein Name	IDI1
Gene Name	IDI1
Cellular localization	Peroxisome .
Purification	The antibody was affinity-purified from rabbit antiserum by affinity-chromatography using epitope-specific immunogen.
Clonality	Polyclonal
Concentration	1 mg/ml
Observed band	
Human Gene ID	3422
Human Swiss-Prot Number	Q13907
Alternative Names	
Background	IDI1 encodes a peroxisomally-localized enzyme that catalyzes the interconversion of isopentenyl diphosphate (IPP) to its highly electrophilic isomer, dimethylallyl diphosphate (DMAPP), which are the substrates for the successive reaction that results in the synthesis of farnesyl diphosphate and, ultimately, cholesterol. It has been shown in peroxisomal deficiency diseases such as Zellweger syndrome and neonatal adrenoleukodystrophy that



there is reduction in IPP isomerase activity.
[provided by RefSeq, Jul 2008],



Western blot analysis of lysates from MDA-MB cells,
primary antibody was diluted at 1:1000, 4° over night