

IFFO1 rabbit pAb

Cat No.:ES15530

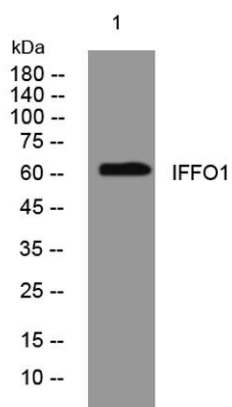
For research use only

Overview

Product Name	IFFO1 rabbit pAb
Host species	Rabbit
Applications	WB
Species Cross-Reactivity	Human; Mouse
Recommended dilutions	WB 1: 500-2000
Immunogen	Synthesized peptide derived from human IFFO1 AA range: 387-437
Specificity	This antibody detects endogenous levels of IFFO1 at Human/Mouse
Formulation	Liquid in PBS containing 50% glycerol, 0.5% BSA and 0.02% sodium azide.
Storage	Store at -20°C. Avoid repeated freeze-thaw cycles.
Protein Name	IFFO1
Gene Name	IFFO1 IFFO
Cellular localization	Nucleus . Nucleus, nucleoplasm . Nucleus inner membrane . Nucleus matrix . Mainly soluble, the remaining is localized in the nuclear matrix (PubMed:31548606). Localized at double-strand break (DSB) sites near the lamina and nuclear matrix structures (PubM
Purification	The antibody was affinity-purified from rabbit antiserum by affinity-chromatography using epitope-specific immunogen.
Clonality	Polyclonal
Concentration	1 mg/ml
Observed band	
Human Gene ID	25900
Human Swiss-Prot Number	Q0D215
Alternative Names	
Background	This gene is a member of the intermediate filament family. Intermediate filaments are proteins which are primordial components of the cytoskeleton and nuclear envelope. The proteins encoded by the



members of this gene family are evolutionarily and structurally related but have limited sequence homology, with the exception of the central rod domain. Multiple alternatively spliced transcript variants encoding different isoforms have been found for this gene. [provided by RefSeq, Jul 2010],



Western blot analysis of lysates from MCF-7 cells, primary antibody was diluted at 1:1000, 4° over night