

IGS21 rabbit pAb

Cat No.:ES15504

For research use only

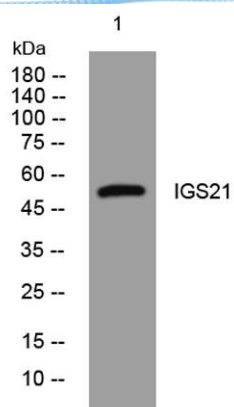
Overview

Product Name	IGS21 rabbit pAb
Host species	Rabbit
Applications	WB
Species Cross-Reactivity	Human; Mouse
Recommended dilutions	WB 1: 500-2000
Immunogen	Synthesized peptide derived from human IGS21 AA range: 289-339
Specificity	This antibody detects endogenous levels of IGS21 at Human/Mouse
Formulation	Liquid in PBS containing 50% glycerol, 0.5% BSA and 0.02% sodium azide.
Storage	Store at -20°C. Avoid repeated freeze-thaw cycles.
Protein Name	IGS21
Gene Name	IGSF21
Cellular localization	Cell junction, synapse, postsynaptic cell membrane ; Lipid-anchor, GPI-anchor .
Purification	The antibody was affinity-purified from rabbit antiserum by affinity-chromatography using epitope-specific immunogen.
Clonality	Polyclonal
Concentration	1 mg/ml
Observed band	
Human Gene ID	84966
Human Swiss-Prot Number	Q96ID5
Alternative Names	
Background	This gene encodes a protein which has two immunoglobulin (Ig) domains and is a member of the immunoglobulin superfamily. Proteins in this superfamily are usually found on or in cell membranes and act as receptors in immune response pathways. [provided by RefSeq, Sep 2011],





ELK Biotechnology



Western blot analysis of lysates from DU145 cells, primary antibody was diluted at 1:1000, 4° over night



+86-27-59760950

ELKbio@ELKbiotech.com

www.elkbiotech.com

23-2, No.388 Gaoxin 2nd Road, Wuhan East Lake Hi-tech Development Zone, Hubei, P.R.C.