

# K1737 rabbit pAb

Cat No.:ES15367

For research use only

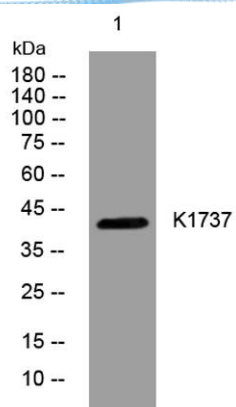
## Overview

Product Name	K1737 rabbit pAb
Host species	Rabbit
Applications	WB
Species Cross-Reactivity	Human; Mouse
Recommended dilutions	WB 1: 500-2000
Immunogen	Synthesized peptide derived from human K1737 AA range: 141-191
Specificity	This antibody detects endogenous levels of K1737 at Human/Mouse
Formulation	Liquid in PBS containing 50% glycerol, 0.5% BSA and 0.02% sodium azide.
Storage	Store at -20°C. Avoid repeated freeze-thaw cycles.
Protein Name	K1737
Gene Name	KIAA1737
Cellular localization	Nucleus . Cytoplasm, cytosol . Predominantly localizes to the nucleus, where it co-localizes with CLOCK. At the G1/S boundary, partially translocated to the cytosol. .
Purification	The antibody was affinity-purified from rabbit antiserum by affinity-chromatography using epitope-specific immunogen.
Clonality	Polyclonal
Concentration	1 mg/ml
Observed band	
Human Gene ID	85457
Human Swiss-Prot Number	Q9C0C6
Alternative Names	
Background	





**ELK Biotechnology**



Western blot analysis of lysates from SH-SY5Y cells,  
primary antibody was diluted at 1:1000, 4° over night



+86-27-59760950

ELKbio@ELKbiotech.com

[www.elkbiotech.com](http://www.elkbiotech.com)

23-2, No.388 Gaoxin 2nd Road, Wuhan East Lake Hi-tech Development Zone, Hubei, P.R.C.