

K1C28 rabbit pAb

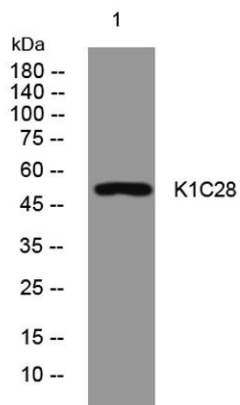
Cat No.:ES15365

For research use only

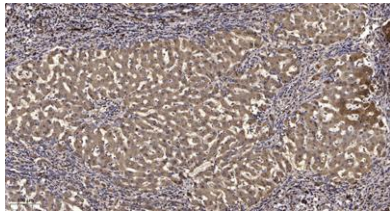
Overview

| | |
|--------------------------|--|
| Product Name | K1C28 rabbit pAb |
| Host species | Rabbit |
| Applications | WB;IHC |
| Species Cross-Reactivity | Human; Mouse |
| Recommended dilutions | WB 1:500-2000;IHC-p 1:50-300 |
| Immunogen | Synthesized peptide derived from human K1C28 AA range: 324-374 |
| Specificity | This antibody detects endogenous levels of K1C28 at Human/Mouse |
| Formulation | Liquid in PBS containing 50% glycerol, 0.5% BSA and 0.02% sodium azide. |
| Storage | Store at -20°C. Avoid repeated freeze-thaw cycles. |
| Protein Name | K1C28 |
| Gene Name | KRT28 KRT25D |
| Cellular localization | Cytoplasm . |
| Purification | The antibody was affinity-purified from rabbit antiserum by affinity-chromatography using epitope-specific immunogen. |
| Clonality | Polyclonal |
| Concentration | 1 mg/ml |
| Observed band | |
| Human Gene ID | 162605 |
| Human Swiss-Prot Number | Q7Z3Y7 |
| Alternative Names | |
| Background | This gene encodes a member of the type I (acidic) keratin family, which belongs to the superfamily of intermediate filament (IF) proteins. Keratins are heteropolymeric structural proteins which form the intermediate filament. These filaments, along with actin microfilaments and microtubules, compose the cytoskeleton of epithelial cells. The type I keratin genes are clustered in a region of chromosome 17q12-q21. [provided by RefSeq, Jul 2009], |





Western blot analysis of lysates from HeLa cells, primary antibody was diluted at 1:1000, 4° over night



Immunohistochemical analysis of paraffin-embedded human liver cancer. 1, Antibody was diluted at 1:200(4° overnight). 2, Tris-EDTA, pH9.0 was used for antigen retrieval. 3, Secondary antibody was diluted at 1:200(room temperature, 45min).

