

# K2C6B rabbit pAb

Cat No.:ES15363

For research use only

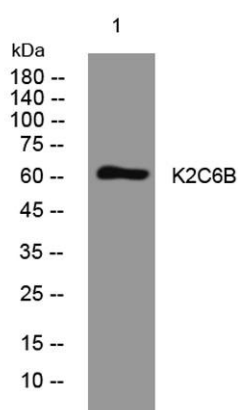
## Overview

Product Name	K2C6B rabbit pAb
Host species	Rabbit
Applications	WB
Species Cross-Reactivity	Human; Mouse
Recommended dilutions	WB 1:500-2000
Immunogen	Synthesized peptide derived from human K2C6B AA range: 93-143
Specificity	This antibody detects endogenous levels of K2C6B at Human/Mouse
Formulation	Liquid in PBS containing 50% glycerol, 0.5% BSA and 0.02% sodium azide.
Storage	Store at -20°C. Avoid repeated freeze-thaw cycles.
Protein Name	K2C6B
Gene Name	KRT6B K6B KRTL1
Cellular localization	keratin filament,extracellular exosome,
Purification	The antibody was affinity-purified from rabbit antiserum by affinity-chromatography using epitope-specific immunogen.
Clonality	Polyclonal
Concentration	1 mg/ml
Observed band	60kD
Human Gene ID	3854
Human Swiss-Prot Number	P04259
Alternative Names	Keratin, type II cytoskeletal 6B (Cytokeratin-6B) (CK-6B) (Keratin-6B) (K6B) (Type-II keratin Kb10)
Background	The protein encoded by this gene is a member of the keratin gene family. The type II cytokeratins consist of basic or neutral proteins which are arranged in pairs of heterotypic keratin chains coexpressed during differentiation of simple and stratified epithelial tissues. As many as six of this type II cytokeratin (KRT6) have been identified; the multiplicity of the genes is attributed to successive





gene duplication events. The genes are expressed with family members KRT16 and/or KRT17 in the filiform papillae of the tongue, the stratified epithelial lining of oral mucosa and esophagus, the outer root sheath of hair follicles, and the glandular epithelia. Mutations in these genes have been associated with pachyonychia congenita. The type II cytokeratins are clustered in a region of chromosome 12q12-q13. [provided by RefSeq, Jul 2008],



Western blot analysis of lysates from 293T cells, primary antibody was diluted at 1:1000, 4° over night

