

KBTB2 rabbit pAb

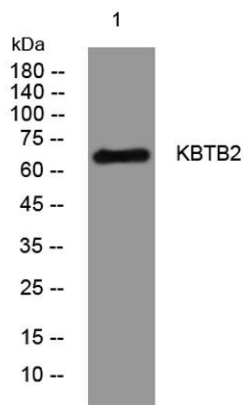
Cat No.:ES15357

For research use only

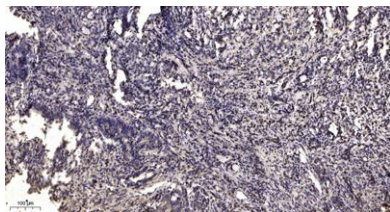
Overview

Product Name	KBTB2 rabbit pAb
Host species	Rabbit
Applications	WB;IHC
Species Cross-Reactivity	Human;Rat;Mouse;
Recommended dilutions	WB 1:500-2000;IHC-p 1:50-300
Immunogen	Synthesized peptide derived from human KBTB2 AA range: 359-409
Specificity	This antibody detects endogenous levels of KBTB2 at Human
Formulation	Liquid in PBS containing 50% glycerol, 0.5% BSA and 0.02% sodium azide.
Storage	Store at -20°C. Avoid repeated freeze-thaw cycles.
Protein Name	KBTB2
Gene Name	KBTBD2 BKLHD1 KIAA1489 CGI-73
Cellular localization	Cul3-RING ubiquitin ligase complex,
Purification	The antibody was affinity-purified from rabbit antiserum by affinity-chromatography using epitope-specific immunogen.
Clonality	Polyclonal
Concentration	1 mg/ml
Observed band	
Human Gene ID	25948
Human Swiss-Prot Number	Q8IY47
Alternative Names	
Background	





Western blot analysis of lysates from HEK293 cells,
primary antibody was diluted at 1:1000, 4° over night



Immunohistochemical analysis of paraffin-embedded
human Gastric adenocarcinoma. 1, Antibody was diluted
at 1:200(4° overnight). 2, Tris-EDTA,pH9.0 was used for
antigen retrieval. 3,Secondary antibody was diluted at
1:200(room temperature, 45min).

