

KBTB5 rabbit pAb

Cat No.:ES15355

For research use only

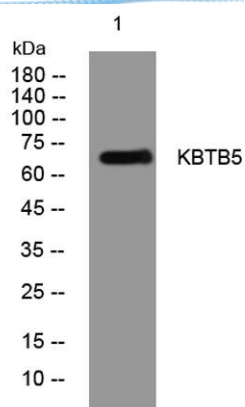
Overview

Product Name	KBTB5 rabbit pAb
Host species	Rabbit
Applications	WB
Species Cross-Reactivity	Human; Mouse
Recommended dilutions	WB 1: 500-2000
Immunogen	Synthesized peptide derived from human KBTB5 AA range: 400-450
Specificity	This antibody detects endogenous levels of KBTB5 at Human/Mouse
Formulation	Liquid in PBS containing 50% glycerol, 0.5% BSA and 0.02% sodium azide.
Storage	Store at -20°C. Avoid repeated freeze-thaw cycles.
Protein Name	KBTB5
Gene Name	KBTBD5 SRYP
Cellular localization	Cytoplasm . Cytoplasm, myofibril, sarcomere, A band . Cytoplasm, myofibril, sarcomere, I band .
Purification	The antibody was affinity-purified from rabbit antiserum by affinity-chromatography using epitope-specific immunogen.
Clonality	Polyclonal
Concentration	1 mg/ml
Observed band	
Human Gene ID	131377
Human Swiss-Prot Number	Q2TBA0
Alternative Names	
Background	This gene encodes a protein containing a BACK domain, a BTB/POZ domain, and 5 Kelch repeats, however, its exact function is not known. The gene and the multi-domain protein structure are conserved across different taxa, including primates, rodents, chicken and zebrafish. [provided by RefSeq, Dec 2012],





ELK Biotechnology



Western blot analysis of lysates from MCF-7 cells, primary antibody was diluted at 1:1000, 4° over night



+86-27-59760950

ELKbio@ELKbiotech.com

www.elkbiotech.com

23-2, No.388 Gaoxin 2nd Road, Wuhan East Lake Hi-tech Development Zone, Hubei, P.R.C.