



# KBTBA rabbit pAb

Cat No.:ES15353

For research use only

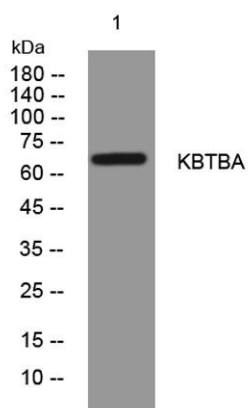
## Overview

Product Name	KBTBA rabbit pAb
Host species	Rabbit
Applications	WB;IHC
Species Cross-Reactivity	Human;Rat
Recommended dilutions	WB 1:500-2000;IHC-p 1:50-300
Immunogen	Synthesized peptide derived from human KBTBA AA range: 268-318
Specificity	This antibody detects endogenous levels of KBTBA at Human/Rat
Formulation	Liquid in PBS containing 50% glycerol, 0.5% BSA and 0.02% sodium azide.
Storage	Store at -20°C. Avoid repeated freeze-thaw cycles.
Protein Name	KBTBA
Gene Name	KBTBD10 KRP1
Cellular localization	Cytoplasm . Cytoplasm, cytoskeleton . Cell projection, pseudopodium . Cell projection, ruffle . Cytoplasm, myofibril, sarcomere, M line . Sarcoplasmic reticulum membrane . Endoplasmic reticulum membrane . Predominantly cytoplasmic but can colocalize with
Purification	The antibody was affinity-purified from rabbit antiserum by affinity-chromatography using epitope-specific immunogen.
Clonality	Polyclonal
Concentration	1 mg/ml
Observed band	
Human Gene ID	10324
Human Swiss-Prot Number	O60662
Alternative Names	
Background	This gene is a member of the kelch-like family. The encoded protein contains a BACK domain, a BTB/POZ domain, and 5 Kelch repeats. This protein is thought to function in skeletal muscle

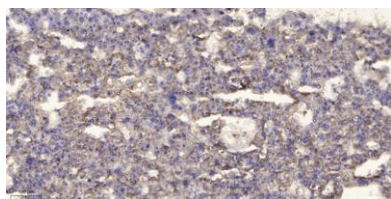




development and maintenance. Mutations in this gene have been associated with nemaline myopathy (NM), a rare congenital muscle disorder. [provided by RefSeq, Mar 2015],



Western blot analysis of lysates from HCT116 cells, primary antibody was diluted at 1:1000, 4° over night



Immunohistochemical analysis of paraffin-embedded human liver cancer. 1, Antibody was diluted at 1:200(4° overnight). 2, Tris-EDTA, pH9.0 was used for antigen retrieval. 3, Secondary antibody was diluted at 1:200(room temperature, 45min).

