

# KIF1B (phospho-Ser1487) rabbit pAb

Cat No.:ES15309

For research use only

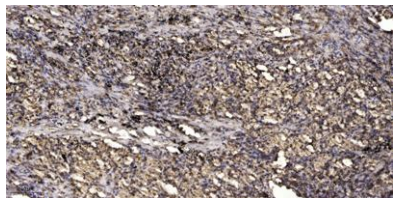
## Overview

Product Name	KIF1B (phospho-Ser1487) rabbit pAb
Host species	Rabbit
Applications	WB;ELISA;IHC
Species Cross-Reactivity	Human;Rat;Mouse;
Recommended dilutions	WB 1:500-2000;IHC-p 1:50-300; ELISA 2000-20000
Immunogen	Synthesized phospho peptide around human KIF1B (Ser1487)
Specificity	This antibody detects endogenous levels of Human KIF1B (phospho-Ser1487)
Formulation	Liquid in PBS containing 50% glycerol, 0.5% BSA and 0.02% sodium azide.
Storage	Store at -20°C. Avoid repeated freeze-thaw cycles.
Protein Name	KIF1B (Ser1487)
Gene Name	KIF1B KIAA0591 KIAA1448
Cellular localization	Cytoplasm, cytoskeleton. Mitochondrion . Cell projection, axon .; [Isoform 1]: Cytoplasmic vesicle, secretory vesicle, synaptic vesicle .
Purification	The antibody was affinity-purified from rabbit antiserum by affinity-chromatography using epitope-specific immunogen.
Clonality	Polyclonal
Concentration	1 mg/ml
Observed band	200kD
Human Gene ID	23095
Human Swiss-Prot Number	O60333
Alternative Names	Kinesin-like protein KIF1B (Klp)
Background	This gene encodes a motor protein that transports mitochondria and synaptic vesicle precursors. Mutations in this gene cause Charcot-Marie-Tooth disease, type 2A1. [provided by RefSeq, Jul 2008],





**ELK Biotechnology**



Immunohistochemical analysis of paraffin-embedded human Squamous cell carcinoma of lung. 1, Antibody was diluted at 1:200(4° overnight). 2, Tris-EDTA,pH9.0 was used for antigen retrieval. 3,Secondary antibody was diluted at 1:200(room temperature, 45min).



+86-27-59760950

[ELKbio@ELKbiotech.com](mailto:ELKbio@ELKbiotech.com)

[www.elkbiotech.com](http://www.elkbiotech.com)

23-2, No.388 Gaoxin 2nd Road,Wuhan East Lake Hi-tech Development Zone, Hubei , P.R.C