

KLH15 rabbit pAb

Cat No.:ES15290

For research use only

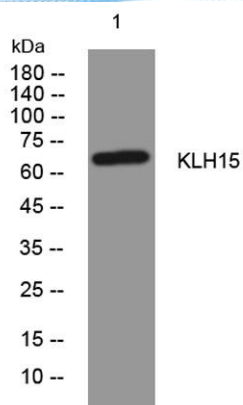
Overview

Product Name	KLH15 rabbit pAb
Host species	Rabbit
Applications	WB;IHC
Species Cross-Reactivity	Human;Rat;Mouse;
Recommended dilutions	WB 1:500-2000;IHC-p 1:50-300
Immunogen	Synthesized peptide derived from human KLH15 AA range: 114-164
Specificity	This antibody detects endogenous levels of KLH15 at Human
Formulation	Liquid in PBS containing 50% glycerol, 0.5% BSA and 0.02% sodium azide.
Storage	Store at -20°C. Avoid repeated freeze-thaw cycles.
Protein Name	KLH15
Gene Name	KLHL15 KIAA1677
Cellular localization	Nucleus .
Purification	The antibody was affinity-purified from rabbit antiserum by affinity-chromatography using epitope-specific immunogen.
Clonality	Polyclonal
Concentration	1 mg/ml
Observed band	
Human Gene ID	80311
Human Swiss-Prot Number	Q96M94
Alternative Names	
Background	This gene encodes a member of the kelch-like family of proteins that share a common domain structure consisting of an N-terminal broad-complex, tramtrack, bric-a-brac/poxvirus and zinc finger domain and C-terminal kelch repeat motifs. The encoded protein may be involved in protein ubiquitination and cytoskeletal organization. [provided by RefSeq, Apr 2009],

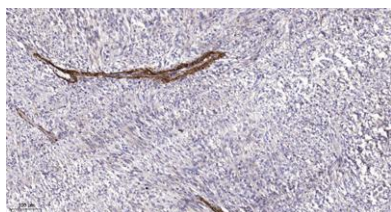




ELK Biotechnology



Western blot analysis of lysates from DU145 cells, primary antibody was diluted at 1:1000, 4° over night



Immunohistochemical analysis of paraffin-embedded human Colon cancer. 1, Antibody was diluted at 1:200(4° overnight). 2, Tris-EDTA, pH9.0 was used for antigen retrieval. 3, Secondary antibody was diluted at 1:200(room temperature, 45min).



+86-27-59760950

ELKbio@ELKbiotech.com

www.elkbiotech.com

23-2, No.388 Gaoxin 2nd Road, Wuhan East Lake Hi-tech Development Zone, Hubei, P.R.C