



# KRA14 rabbit pAb

Cat No.:ES15255

For research use only

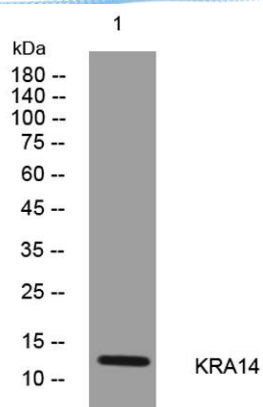
## Overview

Product Name	KRA14 rabbit pAb
Host species	Rabbit
Applications	WB
Species Cross-Reactivity	Human; Mouse
Recommended dilutions	WB 1: 500-2000
Immunogen	Synthesized peptide derived from human KRA14 AA range: 5-55
Specificity	This antibody detects endogenous levels of KRA14 at Human/Mouse
Formulation	Liquid in PBS containing 50% glycerol, 0.5% BSA and 0.02% sodium azide.
Storage	Store at -20°C. Avoid repeated freeze-thaw cycles.
Protein Name	KRA14
Gene Name	KRTAP1-4 KAP1.4 KRTAP1.4
Cellular localization	keratin filament,
Purification	The antibody was affinity-purified from rabbit antiserum by affinity-chromatography using epitope-specific immunogen.
Clonality	Polyclonal
Concentration	1 mg/ml
Observed band	
Human Gene ID	728255
Human Swiss-Prot Number	POC5Y4
Alternative Names	
Background	The main structural proteins of mammalian hair fiber are the hair keratins (see MIM 601077) and the keratin-associated proteins (KAPs), which form a rigid and resistant hair shaft through extensive disulfide bond crosslinking with the abundant cysteines of hair keratins (Shimomura et al., 2002 [PubMed 12228244]).[supplied by OMIM, Jan 2009],





**ELK Biotechnology**



Western blot analysis of lysates from DU145 cells, primary antibody was diluted at 1:1000, 4° over night



+86-27-59760950

ELKbio@ELKbiotech.com

[www.elkbiotech.com](http://www.elkbiotech.com)

23-2, No.388 Gaoxin 2nd Road, Wuhan East Lake Hi-tech Development Zone, Hubei, P.R.C.