

LARP4 rabbit pAb

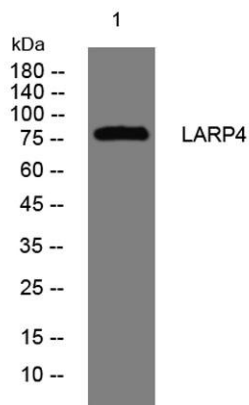
Cat No.:ES15195

For research use only

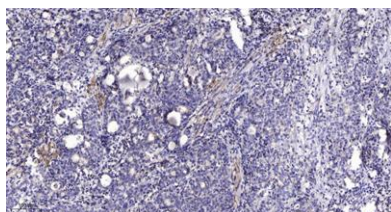
Overview

Product Name	LARP4 rabbit pAb
Host species	Rabbit
Applications	WB;ELISA;IHC
Species Cross-Reactivity	Human; Mouse
Recommended dilutions	WB 1:500-2000;IHC-p 1:50-300; ELISA 2000-20000
Immunogen	Synthesized peptide derived from human LARP4 AA range: 209-259
Specificity	This antibody detects endogenous levels of LARP4 at Human/Mouse
Formulation	Liquid in PBS containing 50% glycerol, 0.5% BSA and 0.02% sodium azide.
Storage	Store at -20°C. Avoid repeated freeze-thaw cycles.
Protein Name	LARP4
Gene Name	LARP4 PP13296
Cellular localization	Cytoplasm, Stress granule . Cytoplasm, cytosol . Localized throughout the cytosol. Partially localized in stress granules in response to arsenite treatment. .
Purification	The antibody was affinity-purified from rabbit antiserum by affinity-chromatography using epitope-specific immunogen.
Clonality	Polyclonal
Concentration	1 mg/ml
Observed band	
Human Gene ID	113251
Human Swiss-Prot Number	Q71RC2
Alternative Names	
Background	





Western blot analysis of lysates from K562 cells, primary antibody was diluted at 1:1000, 4° over night



Immunohistochemical analysis of paraffin-embedded human Gastric adenocarcinoma. 1, Antibody was diluted at 1:200(4° overnight). 2, Tris-EDTA, pH9.0 was used for antigen retrieval. 3, Secondary antibody was diluted at 1:200(room temperature, 45min).

