



LCE2B rabbit pAb

Cat No.:ES15183

For research use only

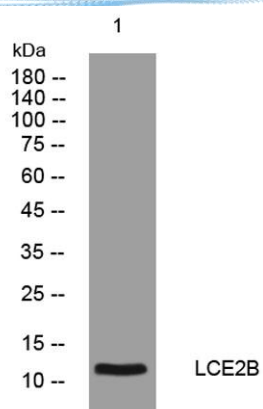
Overview

Product Name	LCE2B rabbit pAb
Host species	Rabbit
Applications	WB
Species Cross-Reactivity	Human;Rat;Mouse;
Recommended dilutions	WB 1: 500-2000
Immunogen	Synthesized peptide derived from human LCE2B AA range: 31-81
Specificity	This antibody detects endogenous levels of LCE2B at Human
Formulation	Liquid in PBS containing 50% glycerol, 0.5% BSA and 0.02% sodium azide.
Storage	Store at -20°C. Avoid repeated freeze-thaw cycles.
Protein Name	LCE2B
Gene Name	LCE2B LEP10 SPRL1B XP5
Cellular localization	cornified envelope,cytoplasm,
Purification	The antibody was affinity-purified from rabbit antiserum by affinity-chromatography using epitope-specific immunogen.
Clonality	Polyclonal
Concentration	1 mg/ml
Observed band	
Human Gene ID	26239
Human Swiss-Prot Number	O14633
Alternative Names	
Background	This gene is one of the at least 20 genes expressed during epidermal differentiation and located on chromosomal band 1q21. This gene is involved in epidermal differentiation, and it is expressed at high levels in normal and psoriatic skin, but not in cultured keratinocytes or in any other tested cell types or tissues. [provided by RefSeq, Jul 2008],





ELK Biotechnology



Western blot analysis of lysates from MCF-7 cells, primary antibody was diluted at 1:1000, 4° over night



+86-27-59760950

ELKbio@ELKbiotech.com

www.elkbiotech.com

23-2, No.388 Gaoxin 2nd Road, Wuhan East Lake Hi-tech Development Zone, Hubei, P.R.C.