

LIN28A (phospho-Ser200) rabbit pAb

Cat No.:ES15159

For research use only

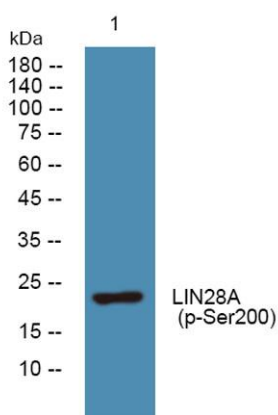
Overview

Product Name	LIN28A (phospho-Ser200) rabbit pAb
Host species	Rabbit
Applications	WB;IHC
Species Cross-Reactivity	Human;Rat;Mouse;
Recommended dilutions	WB 1:500-2000;IHC-p 1:50-300
Immunogen	Synthesized phospho peptide around human LIN28A (Ser200)
Specificity	This antibody detects endogenous levels of Human LIN28A (phospho-Ser200)
Formulation	Liquid in PBS containing 50% glycerol, 0.5% BSA and 0.02% sodium azide.
Storage	Store at -20°C. Avoid repeated freeze-thaw cycles.
Protein Name	LIN28A (Ser200)
Gene Name	LIN28A CSDD1 LIN28 ZCCHC1
Cellular localization	Cytoplasm . Rough endoplasmic reticulum . Cytoplasm, P-body . Cytoplasm, Stress granule . Nucleus, nucleolus . Predominantly cytoplasmic (PubMed:22118463). In the cytoplasm, localizes to peri-endoplasmic reticulum regions and detected in the microsomal fr
Purification	The antibody was affinity-purified from rabbit antiserum by affinity-chromatography using epitope-specific immunogen.
Clonality	Polyclonal
Concentration	1 mg/ml
Observed band	23kD
Human Gene ID	79727
Human Swiss-Prot Number	Q9H9Z2
Alternative Names	Protein lin-28 homolog A (Lin-28A) (Zinc finger CCHC domain-containing protein 1)
Background	This gene encodes a LIN-28 family RNA-binding protein that acts as a posttranscriptional regulator of genes involved in developmental timing and

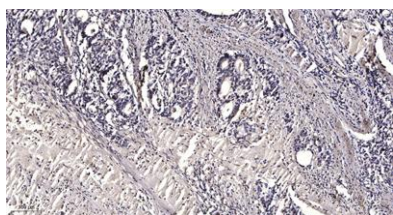




self-renewal in embryonic stem cells. The encoded protein functions through direct interaction with target mRNAs and by disrupting the maturation of certain miRNAs involved in embryonic development. This protein prevents the terminal processing of the LET7 family of microRNAs which are major regulators of cellular growth and differentiation. Aberrant expression of this gene is associated with cancer progression in multiple tissues. [provided by RefSeq, Sep 2015],



Western blot analysis of lysates from K562 cells, primary antibody was diluted at 1:1000, 4° over night



Immunohistochemical analysis of paraffin-embedded human Gastric adenocarcinoma. 1, Antibody was diluted at 1:200(4° overnight). 2, Tris-EDTA,pH9.0 was used for antigen retrieval. 3,Secondary antibody was diluted at 1:200(room temperature, 45min).

