

LMF1 rabbit pAb

Cat No.:ES15139

For research use only

Overview

Product Name	LMF1 rabbit pAb
Host species	Rabbit
Applications	WB
Species Cross-Reactivity	Human; Mouse
Recommended dilutions	WB 1:500-2000
Immunogen	Synthesized peptide derived from human LMF1 AA range: 257-307
Specificity	This antibody detects endogenous levels of LMF1 at Human/Mouse
Formulation	Liquid in PBS containing 50% glycerol, 0.5% BSA and 0.02% sodium azide.
Storage	Store at -20°C. Avoid repeated freeze-thaw cycles.
Protein Name	LMF1
Gene Name	LMF1 C16orf26 TMEM112 HMFN1876 JFP11
Cellular localization	Endoplasmic reticulum membrane ; Multi-pass membrane protein .
Purification	The antibody was affinity-purified from rabbit antiserum by affinity-chromatography using epitope-specific immunogen.
Clonality	Polyclonal
Concentration	1 mg/ml
Observed band	60kD
Human Gene ID	64788
Human Swiss-Prot Number	Q96S06
Alternative Names	Lipase maturation factor 1 (Transmembrane protein 112)
Background	The protein encoded by this gene resides in the endoplasmic reticulum, and is involved in the maturation and transport of lipoprotein lipase through the secretory pathway. Mutations in this gene are associated with combined lipase deficiency. Alternatively spliced transcript variants have been found for this gene. [provided by RefSeq,

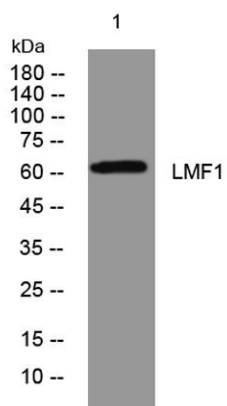




ELK Biotechnology

May 2010],

Western blot analysis of lysates from Hela cells, primary antibody was diluted at 1:1000, 4° over night



+86-27-59760950

ELKbio@ELKbiotech.com

www.elkbiotech.com

23-2, No.388 Gaoxin 2nd Road, Wuhan East Lake Hi-tech Development Zone, Hubei, P.R.C.