

LOX15 rabbit pAb

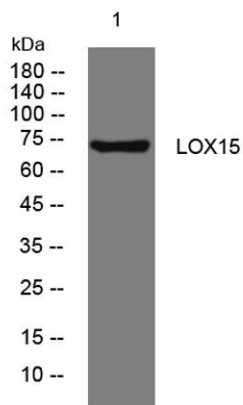
Cat No.:ES15133

For research use only

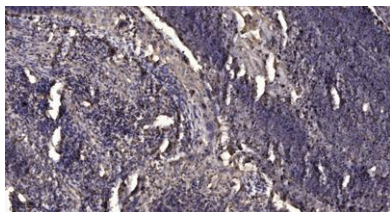
Overview

Product Name	LOX15 rabbit pAb
Host species	Rabbit
Applications	WB;ELISA;IHC
Species Cross-Reactivity	Human;Rat;Mouse;
Recommended dilutions	WB 1:500-2000;IHC-p 1:50-300; ELISA 2000-20000
Immunogen	Synthesized peptide derived from human LOX15 AA range: 156-206
Specificity	This antibody detects endogenous levels of LOX15 at Human
Formulation	Liquid in PBS containing 50% glycerol, 0.5% BSA and 0.02% sodium azide.
Storage	Store at -20°C. Avoid repeated freeze-thaw cycles.
Protein Name	LOX15
Gene Name	ALOX15 LOG15
Cellular localization	Cytoplasm, cytosol . Cell membrane ; Peripheral membrane protein . Lipid droplet . Predominantly cytosolic; becomes enriched at membranes upon calcium binding (By similarity). Translocates from the cytosol to the plasma membrane when stimulated by IL13/in
Purification	The antibody was affinity-purified from rabbit antiserum by affinity-chromatography using epitope-specific immunogen.
Clonality	Polyclonal
Concentration	1 mg/ml
Observed band	
Human Gene ID	246
Human Swiss-Prot Number	P16050
Alternative Names	
Background	





Western blot analysis of lysates from THP-1 cells, primary antibody was diluted at 1:1000, 4° over night



Immunohistochemical analysis of paraffin-embedded human Squamous cell carcinoma of lung. 1, Antibody was diluted at 1:200(4° overnight). 2, Tris-EDTA, pH9.0 was used for antigen retrieval. 3, Secondary antibody was diluted at 1:200(room temperature, 45min).

