

# LOXL3 rabbit pAb

Cat No.:ES15132

For research use only

## Overview

Product Name	LOXL3 rabbit pAb
Host species	Rabbit
Applications	WB
Species Cross-Reactivity	Human; Mouse
Recommended dilutions	WB 1: 500-2000
Immunogen	Synthesized peptide derived from human LOXL3 AA range: 130-180
Specificity	This antibody detects endogenous levels of LOXL3 at Human/Mouse
Formulation	Liquid in PBS containing 50% glycerol, 0.5% BSA and 0.02% sodium azide.
Storage	Store at -20°C. Avoid repeated freeze-thaw cycles.
Protein Name	LOXL3
Gene Name	LOXL3 LOXL
Cellular localization	Secreted, extracellular space . Cytoplasm . Nucleus . It is unclear how LOXL3 is both intracellular (cytoplasmic and nuclear) and extracellular: it contains a clear signal sequence and is predicted to localize in the extracellular medium. However, the int
Purification	The antibody was affinity-purified from rabbit antiserum by affinity-chromatography using epitope-specific immunogen.
Clonality	Polyclonal
Concentration	1 mg/ml
Observed band	
Human Gene ID	84695
Human Swiss-Prot Number	P58215
Alternative Names	
Background	This gene encodes a lysyl oxidase, which likely functions as an amine oxidase and plays a role in the formation of crosslinks in collagens and elastin. Deletion of the related gene in mouse causes

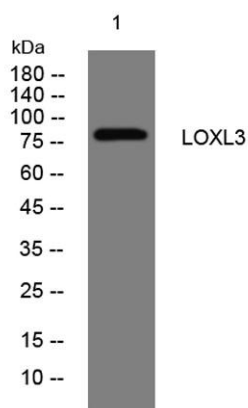




**ELK Biotechnology**

neonatal mortality with cleft palate, spine deformity, and defects in collagen organization. A mutation in this gene was found in a family with Stickler syndrome. [provided by RefSeq, Sep 2016],

Western blot analysis of lysates from U2OS cells, primary antibody was diluted at 1:1000, 4° over night



+86-27-59760950

[ELKbio@ELKbiotech.com](mailto:ELKbio@ELKbiotech.com)

[www.elkbiotech.com](http://www.elkbiotech.com)

23-2, No.388 Gaoxin 2nd Road, Wuhan East Lake Hi-tech Development Zone, Hubei, P.R.C.