

LRCH2 rabbit pAb

Cat No.:ES15112

For research use only

Overview

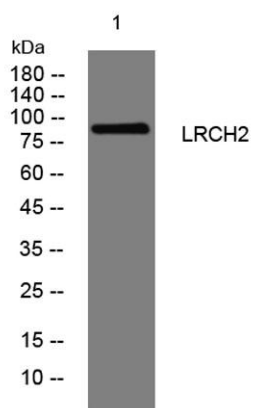
Product Name	LRCH2 rabbit pAb
Host species	Rabbit
Applications	WB
Species Cross-Reactivity	Human; Mouse
Recommended dilutions	WB 1:500-2000
Immunogen	Synthesized peptide derived from human LRCH2 AA range: 34-84
Specificity	This antibody detects endogenous levels of LRCH2 at Human/Mouse
Formulation	Liquid in PBS containing 50% glycerol, 0.5% BSA and 0.02% sodium azide.
Storage	Store at -20°C. Avoid repeated freeze-thaw cycles.
Protein Name	LRCH2
Gene Name	LRCH2 KIAA1495
Cellular localization	
Purification	The antibody was affinity-purified from rabbit antiserum by affinity-chromatography using epitope-specific immunogen.
Clonality	Polyclonal
Concentration	1 mg/ml
Observed band	85kD
Human Gene ID	57631
Human Swiss-Prot Number	Q5VUJ6
Alternative Names	Leucine-rich repeat and calponin homology domain-containing protein 2
Background	This gene encodes a member of the leucine-rich repeat and calponin homology domain-containing protein family. These family members contain multiple N-terminal leucine-rich repeats, in addition to a C-terminal calponin homology domain, a type of domain that mediates interactions with actin filaments. These proteins are conserved across animal species, and studies of a similar Drosophila





ELK Biotechnology

protein indicate a function as a cytoskeletal scaffolding protein. Alternative splicing of this gene results in multiple transcript variants. [provided by RefSeq, Sep 2011],



Western blot analysis of lysates from HeLa cells, primary antibody was diluted at 1:1000, 4° over night



+86-27-59760950

ELKbio@ELKbiotech.com

www.elkbiotech.com

23-2, No.388 Gaoxin 2nd Road, Wuhan East Lake Hi-tech Development Zone, Hubei, P.R.C.