

LRFN1 rabbit pAb

Cat No.:ES15111

For research use only

Overview

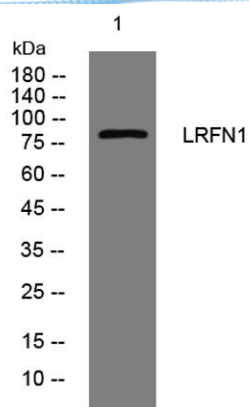
Product Name	LRFN1 rabbit pAb
Host species	Rabbit
Applications	WB
Species Cross-Reactivity	Human; Mouse;Rat
Recommended dilutions	WB 1:500-2000
Immunogen	Synthesized peptide derived from human LRFN1 AA range: 529-579
Specificity	This antibody detects endogenous levels of LRFN1 at Human/Mouse/Rat
Formulation	Liquid in PBS containing 50% glycerol, 0.5% BSA and 0.02% sodium azide.
Storage	Store at -20°C. Avoid repeated freeze-thaw cycles.
Protein Name	LRFN1
Gene Name	LRFN1 KIAA1484 SALM2
Cellular localization	Membrane ; Single-pass type I membrane protein . Cell junction, synapse . Cell junction, synapse, postsynaptic density membrane . Detected in excitatory, but not inhibitory, synaptic plasma membrane. .
Purification	The antibody was affinity-purified from rabbit antiserum by affinity-chromatography using epitope-specific immunogen.
Clonality	Polyclonal
Concentration	1 mg/ml
Observed band	85kD
Human Gene ID	57622
Human Swiss-Prot Number	Q9P244
Alternative Names	Leucine-rich repeat and fibronectin type III domain-containing protein 1 (Synaptic adhesion-like molecule 2)

Background





ELK Biotechnology



Western blot analysis of lysates from 293T cells, primary antibody was diluted at 1:1000, 4° over night



+86-27-59760950

ELKbio@ELKbiotech.com

www.elkbiotech.com

23-2, No.388 Gaoxin 2nd Road, Wuhan East Lake Hi-tech Development Zone, Hubei, P.R.C.