

LRRC2 rabbit pAb

Cat No.:ES15103

For research use only

Overview

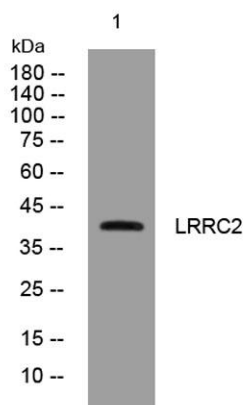
Product Name	LRRC2 rabbit pAb
Host species	Rabbit
Applications	WB
Species Cross-Reactivity	Human; Mouse
Recommended dilutions	WB 1: 500-2000
Immunogen	Synthesized peptide derived from human LRRC2 AA range: 130-180
Specificity	This antibody detects endogenous levels of LRRC2 at Human/Mouse
Formulation	Liquid in PBS containing 50% glycerol, 0.5% BSA and 0.02% sodium azide.
Storage	Store at -20°C. Avoid repeated freeze-thaw cycles.
Protein Name	LRRC2
Gene Name	LRRC2
Cellular localization	
Purification	The antibody was affinity-purified from rabbit antiserum by affinity-chromatography using epitope-specific immunogen.
Clonality	Polyclonal
Concentration	1 mg/ml
Observed band	
Human Gene ID	79442
Human Swiss-Prot Number	Q9BYS8
Alternative Names	
Background	This gene encodes a member of the leucine-rich repeat-containing family of proteins, which function in diverse biological pathways. This family member may possibly be a nuclear protein. Similarity to the RAS suppressor protein, as well as expression down-regulation observed in tumor cells, suggests that it may function as a tumor suppressor. The gene is located in the chromosome 3 common eliminated region 1 (C3CER1), a 1.4 Mb region that is





ELK Biotechnology

commonly deleted in diverse tumors. A related pseudogene has been identified on chromosome 2. [provided by RefSeq, Sep 2011],



Western blot analysis of lysates from AD293 cells, primary antibody was diluted at 1:1000, 4°over night



+86-27-59760950

ELKbio@ELKbiotech.com

www.elkbiotech.com

23-2, No.388 Gaoxin 2nd Road,Wuhan East Lake Hi-tech Development Zone, Hubei , P.R.C