



LRWD1 rabbit pAb

Cat No.:ES15093

For research use only

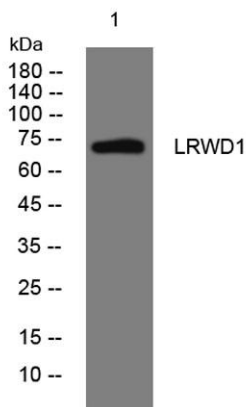
Overview

Product Name	LRWD1 rabbit pAb
Host species	Rabbit
Applications	WB;IHC
Species Cross-Reactivity	Human; Mouse
Recommended dilutions	WB 1:500-2000;IHC-p 1:50-300
Immunogen	Synthesized peptide derived from human LRWD1 AA range: 395-445
Specificity	This antibody detects endogenous levels of LRWD1 at Human/Mouse
Formulation	Liquid in PBS containing 50% glycerol, 0.5% BSA and 0.02% sodium azide.
Storage	Store at -20°C. Avoid repeated freeze-thaw cycles.
Protein Name	LRWD1
Gene Name	LRWD1 ORCA
Cellular localization	Nucleus . Chromosome, centromere. Chromosome, telomere. Cytoplasm, cytoskeleton, microtubule organizing center, centrosome . Chromosome, centromere, kinetochore . Localizes to heterochromatin during G1 phase. Restricted to centromeres or telomeres as cell
Purification	The antibody was affinity-purified from rabbit antiserum by affinity-chromatography using epitope-specific immunogen.
Clonality	Polyclonal
Concentration	1 mg/ml
Observed band	
Human Gene ID	222229
Human Swiss-Prot Number	Q9UFQ0
Alternative Names	
Background	The protein encoded by this gene interacts with components of the origin recognition complex (ORC) and regulates the formation of the prereplicative complex. The encoded protein stabilizes the ORC

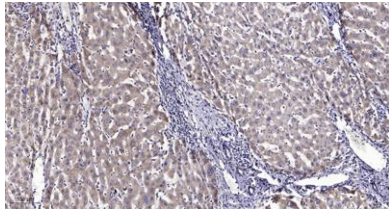




and therefore aids in DNA replication. This protein is required for the G1/S phase transition of the cell cycle. In addition, the encoded protein binds to trimethylated histone H3 in heterochromatin and recruits the ORC and lysine methyltransferases, which help maintain the repressive heterochromatic state. Two transcript variants encoding different isoforms have been found for this gene. [provided by RefSeq, Dec 2015],



Western blot analysis of lysates from PC-12 cells, primary antibody was diluted at 1:1000, 4° over night



Immunohistochemical analysis of paraffin-embedded human liver cancer. 1, Antibody was diluted at 1:200(4° overnight). 2, Tris-EDTA, pH9.0 was used for antigen retrieval. 3, Secondary antibody was diluted at 1:200(room temperature, 45min).

